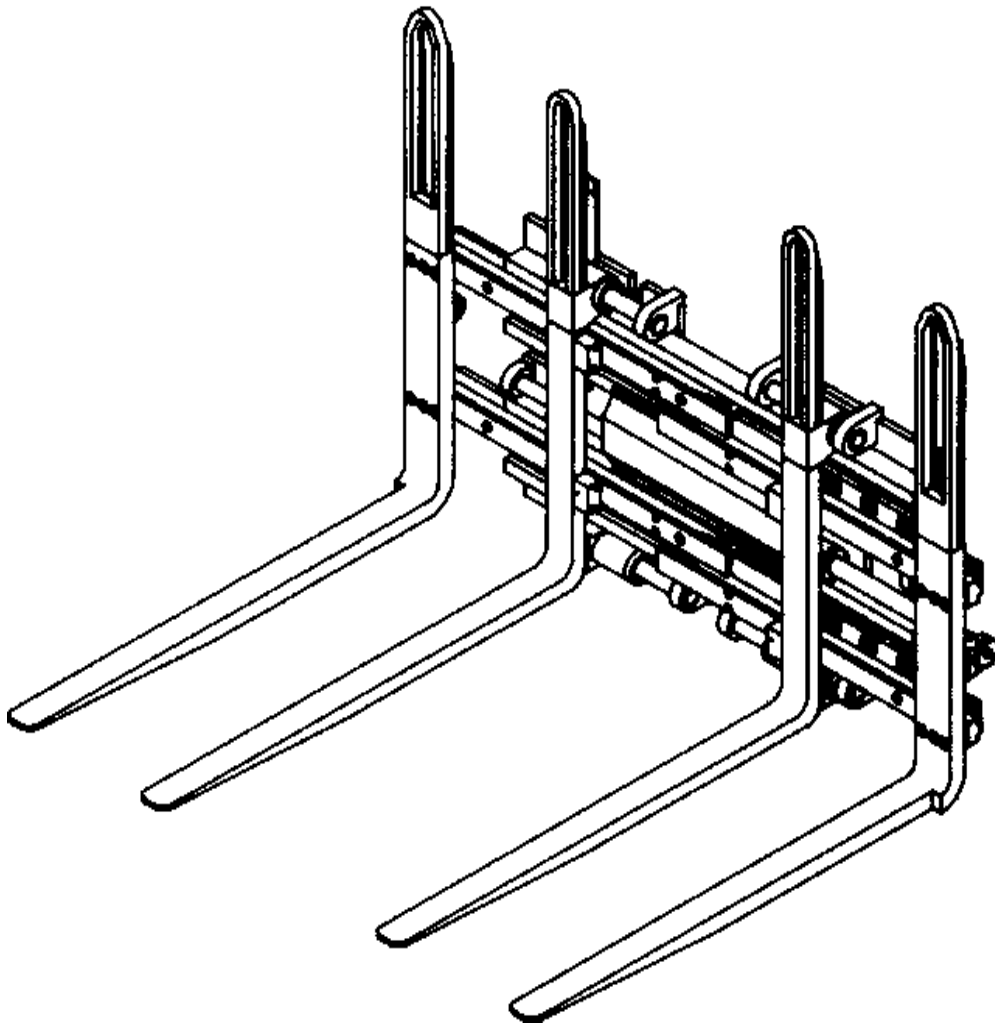


Long Reach[®] ***Manufacturing Co.***

PARTS MANUAL

SINGLE / DUAL PALLET HANDLER



MODEL NUMBER: LDS5ANSFM342NRGBN0
SERIAL NUMBER: _____
FACTORY ORDER NO.: _____
SHIPMENT DATE: _____

INDEX

SINGLE / DUAL PALLET HANDLER

A. HOW TO ORDER PARTS

How to Order Parts	A - 1
Model Identification	A - 2

B. USER'S SAFETY TIPS

Safety Tips	B - 1
Load Handling	B - 2
Load Positioning	B - 3

C. MECHANICAL PARTS GROUP

Complete Assembly	C - 1
Body Assembly	C - 2
Mounting Kit Assembly	C - 3
Side Shift Hanger Assembly	C -
Inner Fork Assembly	3 a
Outer Fork Assembly	C - 4
	C - 5

D. HYDRAULIC PARTS GROUP

Cylinder Assembly	
Hydraulics Assembly, Clamp	D - 1
Hydraulics Assembly, Side Shift	D - 2
	D - 3

E. SPARE PARTS GROUP

Recommended Spare Parts	
Spare Parts Log	E - 1
Parts Manual Order Form	E - 2
	E - 3

HOW TO ORDER PARTS

For quick, professional, and courteous service when you need parts for your equipment, here is what you should do:

1. Locate the model identification tag on the equipment.
2. Make a note of the model number and serial number.
3. Refer to the appropriate pages in the parts manual for the correct part numbers and quantities.
4. Call your local **Long Reach/Brudi** dealer from whom you purchased the clamp.
5. If you are unable to identify the selling dealer, contact **Long Reach/Brudi** with the serial number. **Long Reach/Brudi** will identify the dealer for you.

For handy reference, write the name of your Long Reach dealer here:

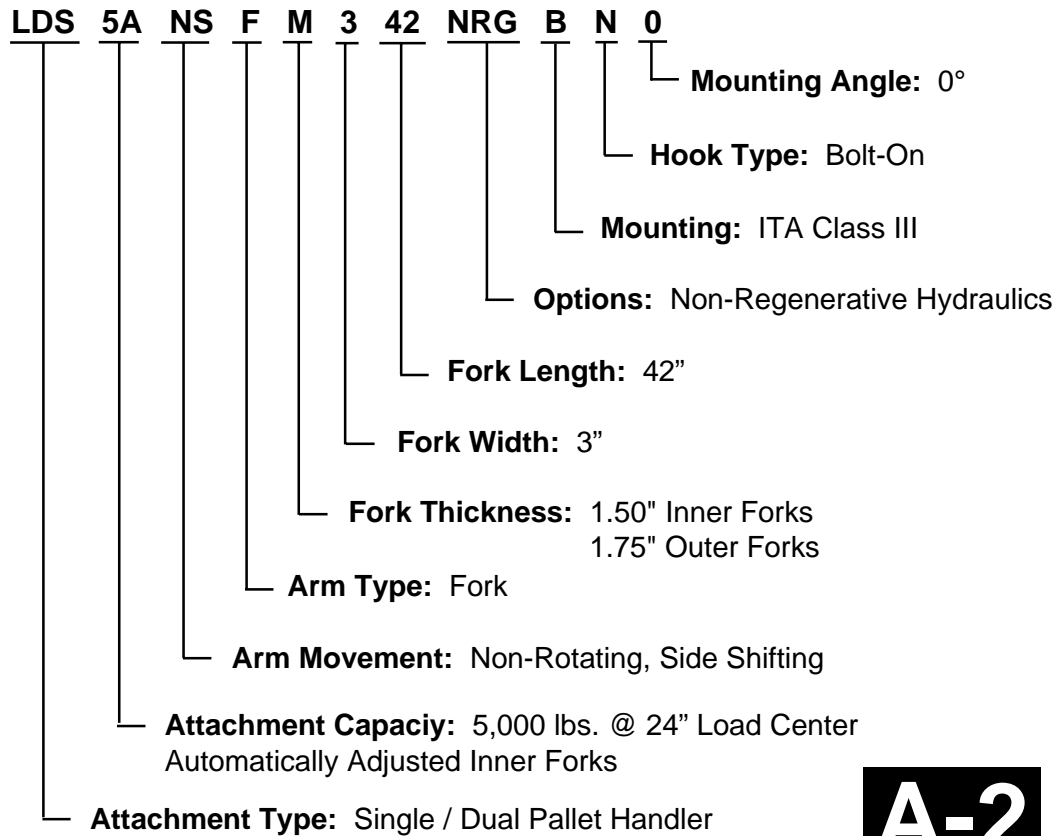
DEALER NAME	_____
ADDRESS	_____ _____
PHONE	_____
CONTACT	_____

Long Reach/Brudi Parts Department
12300 Amelia Drive
Houston, TX 77045
Parts Phone:(800) 547-3174
Fax:(713) 433-9710

MODEL IDENTIFICATION

Each clamp is identified by a model number and a serial number located on the name plate attached to the unit prior to shipment.

Before ordering replacement parts for any unit, be sure to use the correct parts list for your model number. Both model number and serial number must be given to ensure that the correct parts are ordered.



USER'S SAFETY TIPS

Safety is Everyone's Responsibility

Whether you are new on the job or a seasoned veteran, these safety tips may prevent injury to you, to others, or to the materials you are handling. Always be alert, watch out for others, and follow these suggestions:

Attachments Handle Material - Not People.

Safety starts with common sense.

1. **Never** stand on top of material being raised, lowered, or transported.
2. **Never** use the attachment or its load to support a man-carrying device.
3. **Never** position an attachment or load over people.
4. **Never** leave an attachment or load in an elevated position.



**NEVER STAND
UNDER
ATTACHMENT**



**NEVER STAND
BETWEEN
CLAMPING SURFACES**

5. **Never** stand in front of or beside an attachment that is being operated. Never allow another person to approach an attachment that is being operated.
6. **Always** operate an attachment from the operator's seat, never while standing next to the lift truck.
7. **Never** reach through the mast of the truck. Keep all parts of the body within the driver's compartment.
8. **Do not** allow riders on the truck at any time.
9. **Never** leave a lift truck unattended without lowering the load to the floor, setting the brake, and turning the truck off.
10. **Never** transport a load that impedes full vision forward. Use reverse.
11. **Watch** for pedestrians when transporting. Sudden stops can dislodge all or part of a load.

USER'S SAFETY TIPS

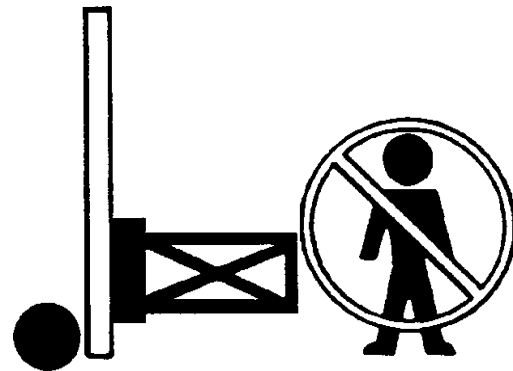
Load Handling

1. **All** operators must be trained and qualified.
2. **Never** overload the attachment. Refer to the attachment nameplate for the rated capacity of the attachment. Refer to the nameplate of the truck for the net working capacity of the truck and attachment. Observe the lower of the two capacities. The attachment capacity is the structural rating of the attachment and should not be exceeded. Net working capacity is the truck manufacturer's rating of the truck/attachment combination.



3. **Never** use a load to support or move another object. Doing so can easily exceed the holding capacity of the attachment, causing loss of the load.
4. **Never** lift, lower, side shift, pivot, rotate, or tilt loads while traveling. Repositioning loads while traveling affects the stability of the truck and may impede vision or clearances.

5. **Never** speed or race a lift truck. High speed adversely affects the stability and steering of the lift truck.
6. **Do not** use an attachment to open or close boxcar doors. Doing so can severely damage the attachment and cause loss of warranty. Using damaged roll clamp pads can cause severe paper damage.



7. **Do not** carry loose items or rolls on top of a load.
8. **Never** allow anyone under a load or under the carriage.
9. **Never** use chains, cables, or other devices in conjunction with an attachment for load handling.
10. **Report** all damaged or faulty equipment. Do not operate a lift truck or an attachment until repairs have been made.
11. **Never** clamp wood, skids, pallets, or any other incompatible load with an attachment.

USER'S SAFETY TIPS

12. **Do not** carry more than one paper roll with a roll clamp unless the clamp is specifically designed for multiple rolls.
13. **Travel** slowly around corners. Sound horn on blind corners. Be careful of tail swing and overhead clearances. Watch in all directions. Avoid sudden stops.
14. **Do not** exceed the specified maximum operating pressure for the attachment. To do so can severely damage the attachment and cause loss of warranty.

Load Positioning

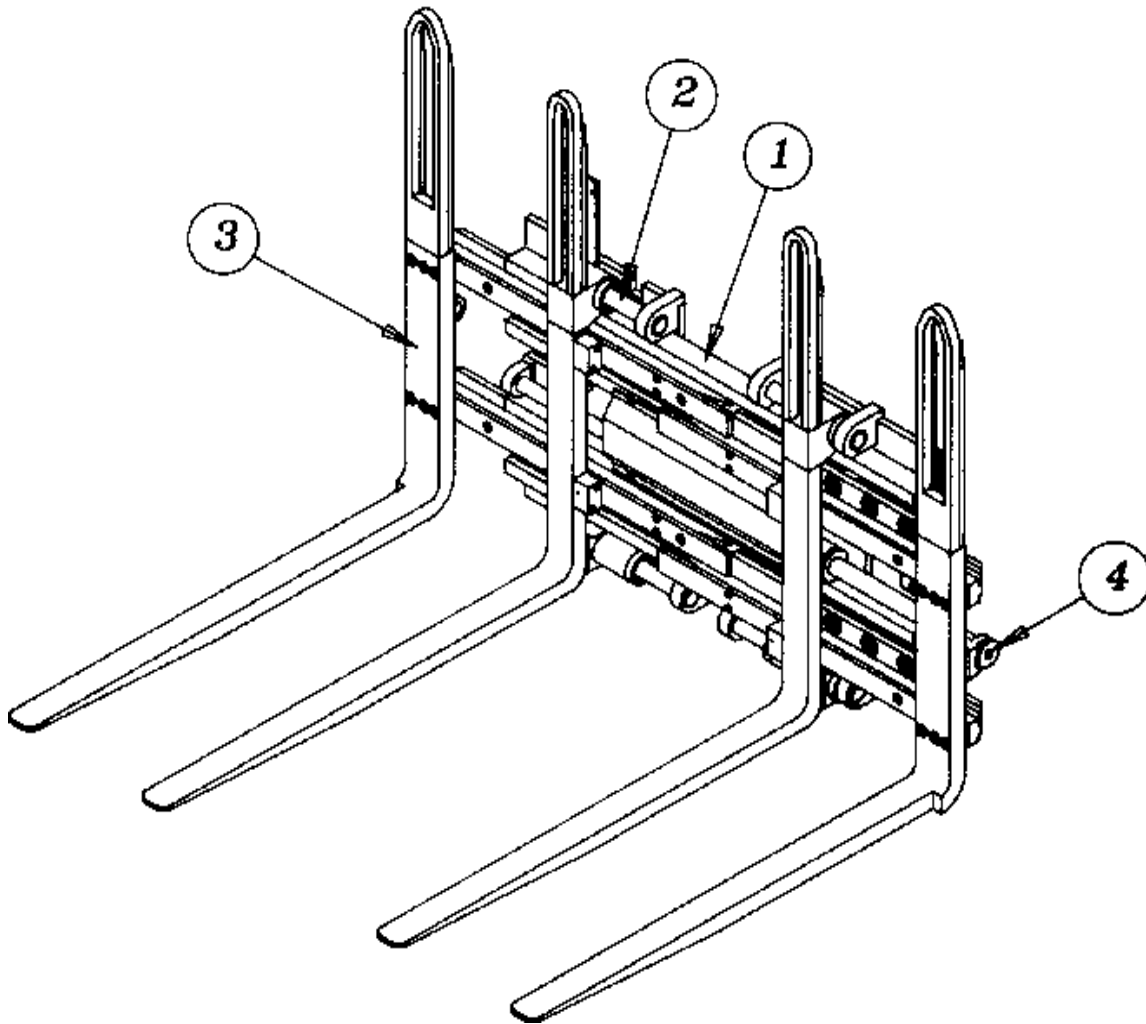
1. **Always** carry loads as close to the floor as possible, consistent with the surface being traversed. Scraping or bumping the floor surface with the load or the attachment can severely damage the attachment and cause product damage. The mast should be tilted backward.
 2. **Always** keep the load positioned as close as possible to the horizontal center of the lift truck.
 3. **Always** back down ramps or inclines. Driving forward down a ramp or incline with a clamped load will lessen the stability of the truck.
 4. **Do not** cross dock boards or dock levelers with the attachment or carriage fully lowered.
- Ramming the front or rear of the attachment against a dock board can cause severe damage.
5. **Always** check loads to be handled. If they are broken, unbalanced, loose, or too heavy, advise a supervisor or properly correct the situation prior to handling.
 6. **Limit** lift truck movement to a minimum when high stacking. Limit sideshift movement to a minimum when high stacking.
 7. **Always** be observant when high stacking. Look for poorly stacked loads, overhead obstacles, broken cartons, or damaged products in the stack.
 8. **Always** carry cylindrically shaped loads in the vertical position, not the horizontal.
 9. **Always** clamp a paper roll with the contact pads of the paper roll clamp, not the arm or arm base.
 10. **Never** rotate a load that is off center to the centerline of rotation. Severe damage to the rotator could result.
 11. **Always** position the short arm pad of a paper roll clamp against the roll before clamping to prevent lateral movement of the roll while the roll is being clamped.
 12. **Always** check the attachment for proper fit and engagement of the truck carriage.



OSHA or state regulations may require the installation of backrests. We suggest that you check your application against these requirements.

MECHANICAL PARTS GROUP

COMPLETE ASSEMBLY

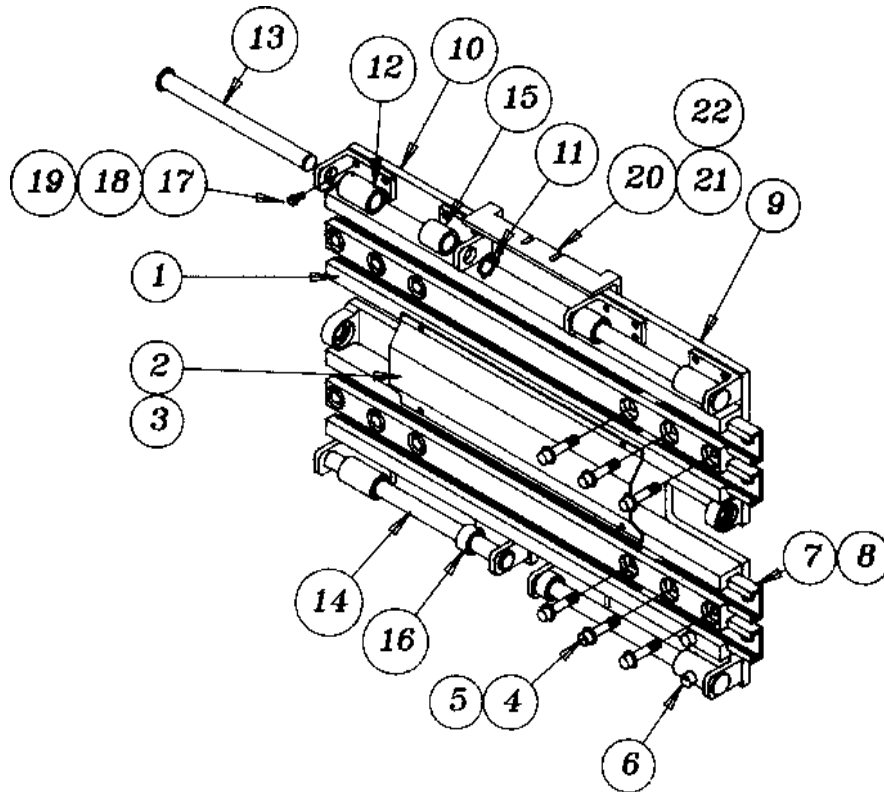


ITEM NO.	DESCRIPTION	NO. REQ'D	PART NO.
1.	Body Assembly	—	<i>Page C-2</i>
2.	Inner Fork Group	—	<i>Page C-4</i>
3.	Outer Fork Group	—	<i>Page C-5</i>
4.	Cylinder Assembly	—	<i>Page D-1</i>

C-1

MECHANICAL PARTS GROUP

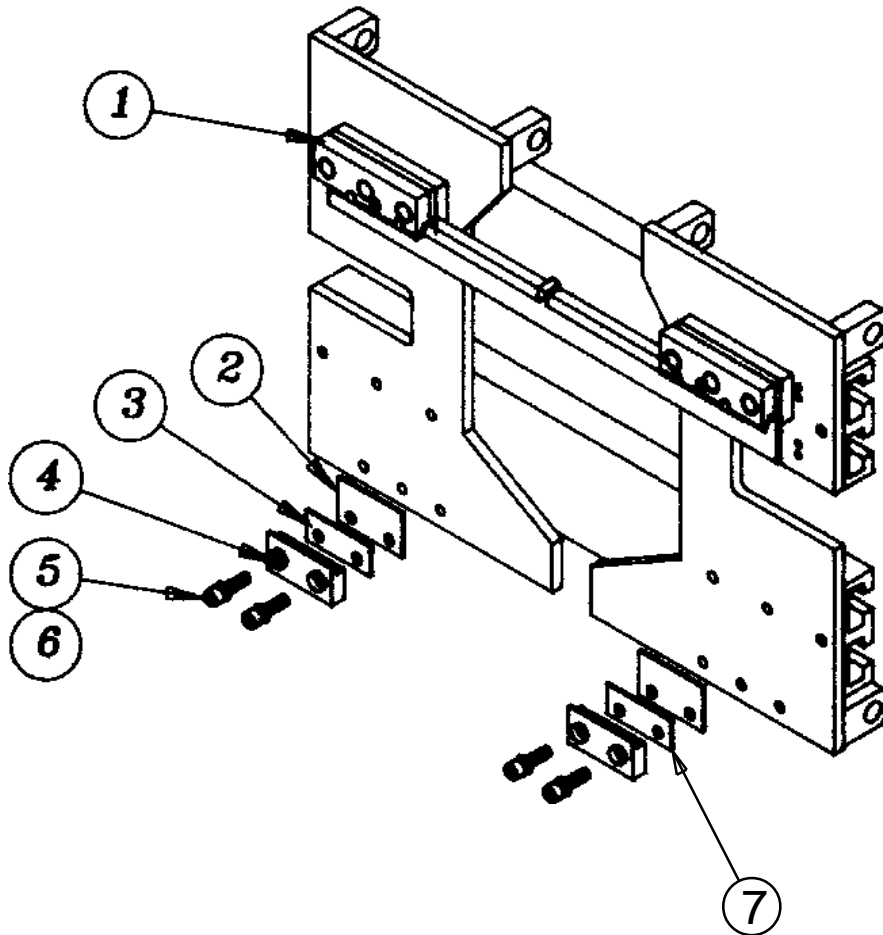
BODY ASSEMBLY



ITEM NO.	DESCRIPTION	NO. REQ'D	PART NO.
1.	Body Extrusion	2	BSN-0029-LCSGM
2.	Cover Plate	1	CVR-0062-LDSTM
3.	Capscrew	4	A-246
4.	Capscrew	12	AA-100
5.	Washer	12	DA-47
6.	Wearstrip Retainer	8	WST-0005-LCSTM
7.	Wearstrip, Inner	4	WST-0003-LCSGM
8.	Wearstrip, Outer	8	WST-0002-LCSTM
9.	Body Strap, L.H.	1	STP-0193-LDSTM
10.	Body Strap, R.H.	1	STP-0192-LDSTM
11.	Snap Ring	<i>Ref.</i>	JA-59
12.	Spacer, Outer	4	SPS-0231-LDSTM
13.	Upper Fork Pin	<i>Ref.</i>	PNC-0033-LDSTM
14.	Lower Fork Pin	<i>Ref.</i>	PNC-0034-LDSTM
15.	Spacer, Inner, Top	2	SPS-0229-LDSTM
16.	Spacer, Inner, Bottom	2	SPS-0172-LDSTM
17.	Pin Bracket	8	BKT-0121-LDSTM
18.	Capscrew	28	AC-14
19.	Lockwasher	32	D-6
20.	Valve Plate	1	HVP-0092-LDSTM
21.	Capscrew	4	AC-18
22.	Hex Nut	4	C-36

MECHANICAL PARTS GROUP

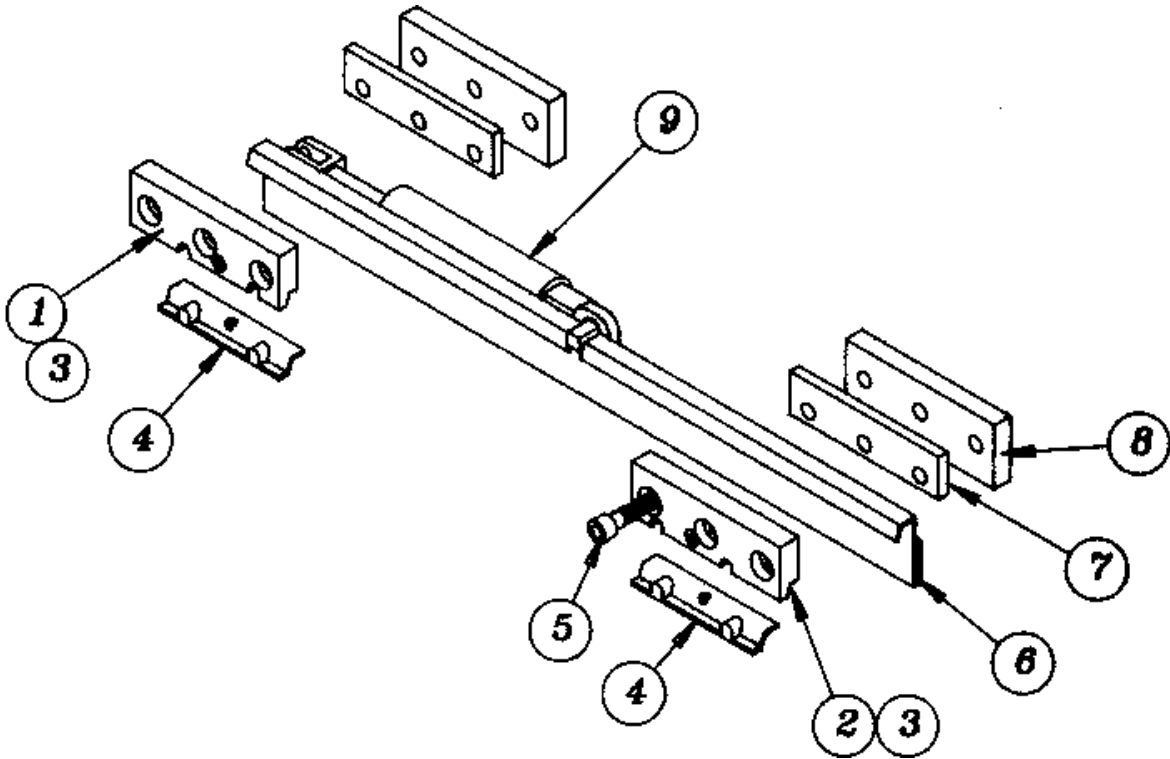
CLASS III MOUNTING ASSEMBLY



ITEM NO.	DESCRIPTION	NO. REQ'D	PART NO.
1.	S. S. Hanger Assembly	1	<i>Page C-3a</i>
2.	Lower Hook Shim	2	SPS-0031-LDSTM
3.	Lower Hook Wear Plate	2	XO-211
4.	Lower Hook	2	XO-209
5.	Capscrew	4	AA-40
6.	Lockwasher	4	DAB-12
7.	Lower Hook Shim	2	XO-210

MECHANICAL PARTS GROUP

SIDE SHIFT HANGER ASSEMBLY

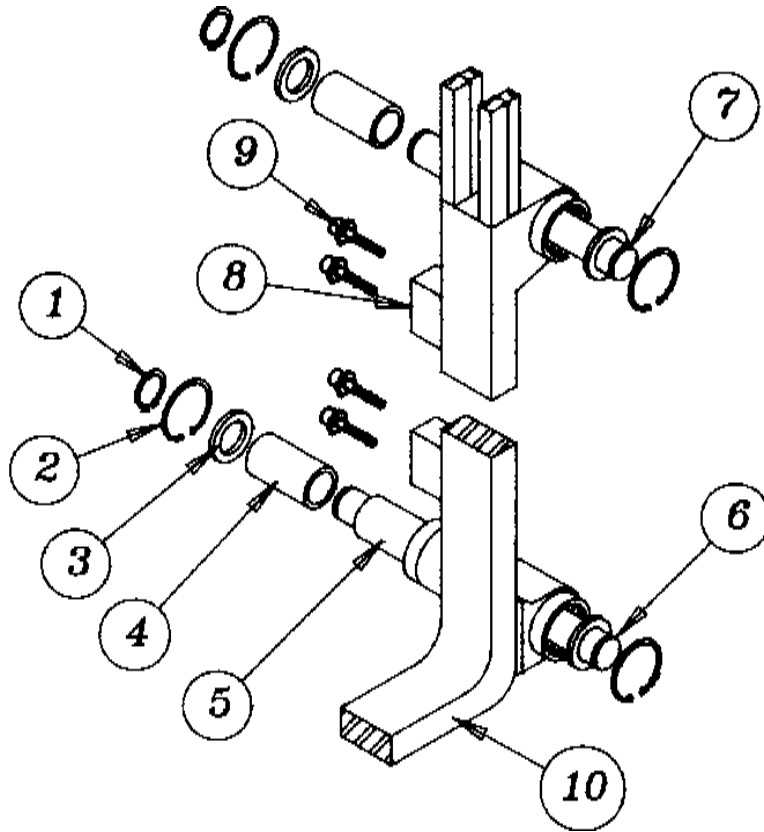


ITEM NO.	DESCRIPTION	NO. REQ'D	PART NO.
1.	Top Hook, L.H.	1	HKS-0022-LDSSM
2.	Top Hook, R.H.	1	HKS-0020-LDSSM
3.	Zerk	2	JB-5
4.	Wearstrip	2	P-351
5.	Capscrew	6	AA-100
6.	Hanger	1	HPL-0044-LDSTM
7.	Top Hook Spacer	2	SPS-0037-LDSSM
8.	Top Hook Spacer	2	SPS-0034-LDSSM
9.	Side Shift Cylinder	-	

C-3a

MECHANICAL PARTS GROUP

INNER FORK ASSEMBLY

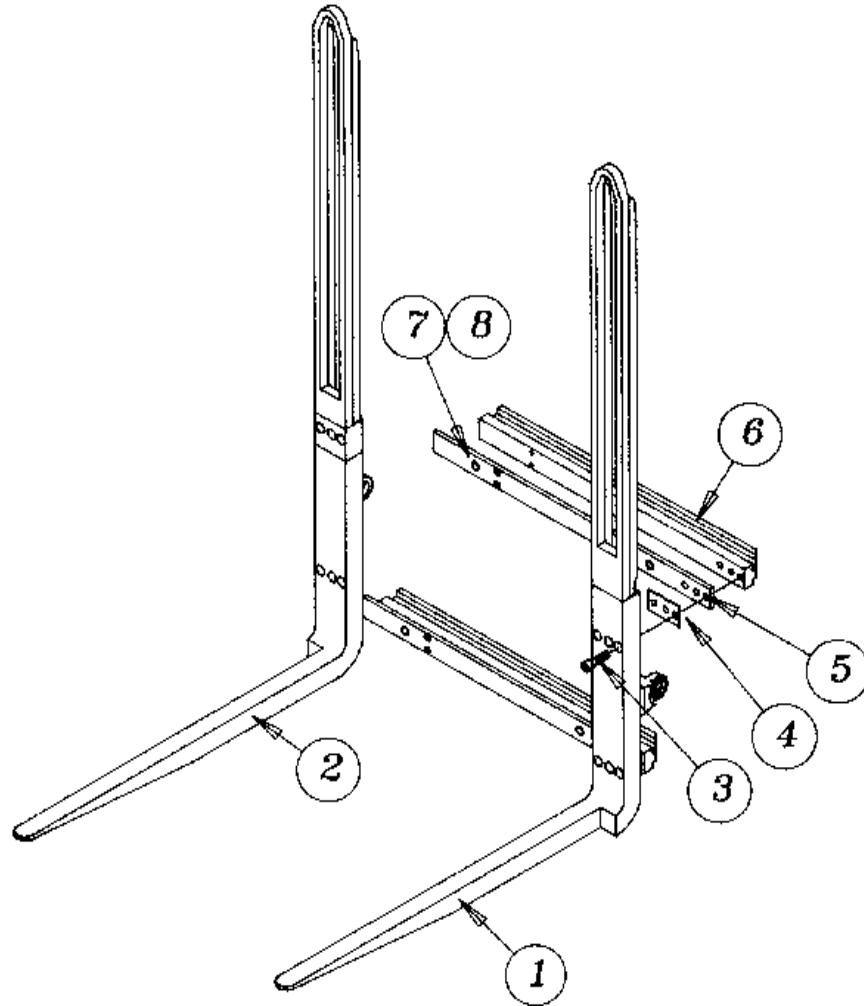


ITEM NO.	DESCRIPTION	NO. REQ'D	PART NO.
1.	Snap Ring	4	JA-59
2.	Snap Ring	8	JA-74
3.	Wiper Ring	8	KB-201
4.	Bearing	4	G-441
5.	Bearing Guide	2	SPS-0090-LDSTM
6.	Lower Fork Pin	2	PNC-0034-LDSTM
7.	Upper Fork Pin	2	PNC-0033-LDSTM
8.	Slide Ball Retainer	4	RET-0082-LDSTM
9.	Capscrew	8	A-36
10.	Inner Fork, L.H.	1	GFM-0282-LDSTM
	Inner Fork, R.H.	1	GFM-0283-LDSTM

C-4

MECHANICAL PARTS GROUP

OUTER FORK ASSEMBLY

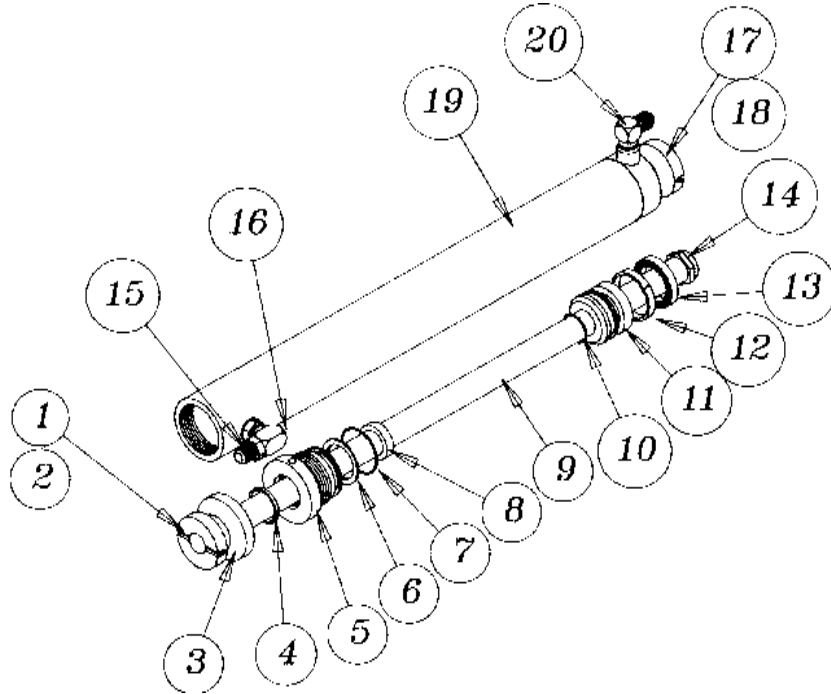


ITEM NO.	DESCRIPTION	NO. REQ'D	PART NO.
1.	Fork, L.H.	1	GFM-0251-LDSTM
2.	Fork, R.H.	1	GFM-0252-LDSTM
3.	Capscrew	12	AA-40
4.	Slide Spacer	4	SPS-0241-LDSTM
5.	Wearstrip	4	WST-0097-LDSGM
6.	Slide	4	SLD-0104-LDSGM
7.	Capscrew	8	A-262
8.	Bushing	8	Q-15

C-5

HYDRAULIC PARTS GROUP

CYLINDER ASSEMBLY



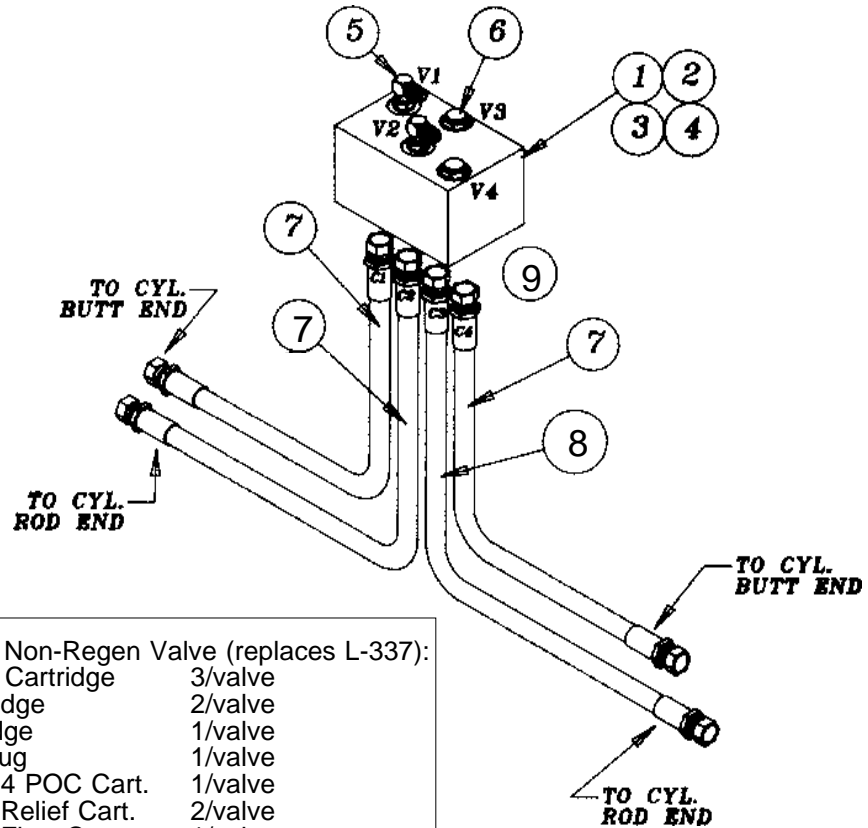
ITEM NO.	DESCRIPTION	NO. REQ'D	PART NO.
1.	Flush Nut	1	CFN-0002-LCSTM
2.	Cotter Pin	1	E-7
3.	Spacer Washer	1	XA-18
4.	Wiper Ring	1	*KB-169
5.	Stuffing Box	1	CSB-0002-LCSDM
6.	Backup Ring	1	*K-182
7.	O Ring	1	*K-16
8.	Rod Seal	1	*KB-168
9.	Cylinder Rod	1	CRD-0007-LCCDM
10.	O Ring	1	*K-146
11.	Piston	1	CPN-0002-LCSDM
12.	Piston Bearing	1	*KB-166
13.	Piston Seal	1	*KB-167
14.	Flex Locknut	1	C-86
15.	Straight Adapter	1	O-81
16.	Plug	1	HF-31
17.	Flush Nut	1	CFN-0001-LCSTM
18.	Cotter Pin	1	E-16
19.	Cylinder Tube	1	CTB-0110-LCSDM
20.	90° Fitting	1	O-265
-	Complete Assembly	-	CSY-0067-LCSDM
-	Packing Kit (See Note)	-	*MS-435

*NOTE: Parts included in packing kit. One packing kit will reseal two cylinders.

D-1

HYDRAULIC PARTS GROUP

CLAMP HYDRAULICS



For the L-352, Side Shift, Non-Regen Valve (replaces L-337):

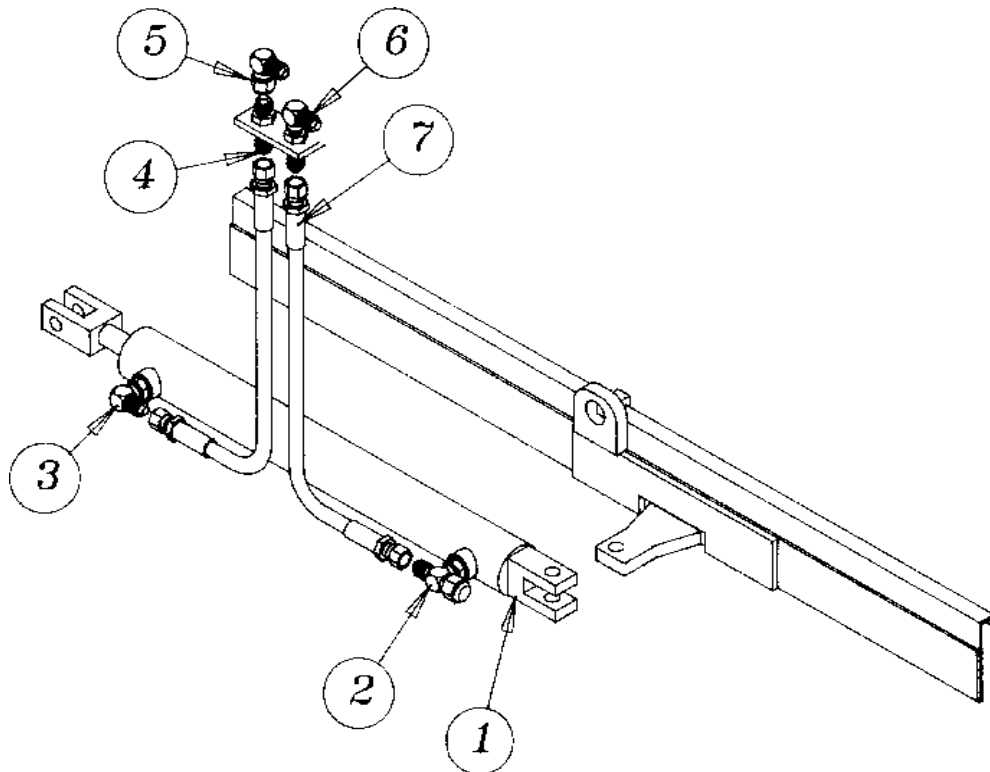
L-352-POC	P.O. Check Cartridge	3/valve
L-352-REL	Relief Cartridge	2/valve
L-352-FD	Flow Cartridge	1/valve
L-352-1	#10 SAE Plug	1/valve
L-330-SK	Seal Kit for 4 POC Cart.	1/valve
L-269-1	Seal Kit for Relief Cart.	2/valve
L-277-2	Seal Kit for Flow Cart.	1/valve

ITEM NO.	DESCRIPTION	NO. REQ'D	PART NO.
1.	Valve	1	L-352
2.	Capscrew	2	A-33
3.	Lockwasher	2	D-4
4.	Flat Washer	2	DA-4
5.	90° Adapter	2	O-310
6.	Plug	2	O-299
7.	Hose Assembly, 29" Long	3	O-512
8.	Hose Assembly, 22" Long	1	O-442
9.	Straight Adapter	4	O-342
-	Hose Armour	<i>Specify Length</i>	OA-23

D-2

HYDRAULIC PARTS GROUP

SIDE SHIFT HYDRAULICS



ITEM NO.	DESCRIPTION	NO. REQ'D	PART NO.
1.	Cylinder	1	LD-37
2.	Restrictor	1	RV-6-90
3.	90° Adapter	1	O-265
4.	Bulkhead Straight	1	O-287
5.	90° Adapter	1	O-318
6.	90° Bulkhead	1	O-316
7.	Hose Assembly	2	O-375
-	Hose Armour	<i>Specify Length</i>	OA-23

D-3

SPARE PARTS GROUP

RECOMMENDED SPARE PARTS

DESCRIPTION	PART NO.	NO. REQ'D PER NO. OF UNITS IN SERVICE	
		1 - 5	6 - 10
Cylinder Packing Kit	MS-435	1	2
Top Hook Wear Strips	P-351	2	4
Side Shift Cylinder	LD-37	1	2
Restrictor Valve	RV-6-90	0	2
Restrictor Valve Seal	K-130	1	2
Bottom Hook Wear Strips	XO-211	2	4
Check Valve	L-352	0	1
Cartridge	L-352-POC	3	3
Seal Kit	L-330-SK	1	2
Flow Cartridge	L-352-FD	0	1
Seal Kit	L-277-2	1	1
Relief Cartridge	L-352-REL	0	2
Seal Kit	L-269-1	2	2
Wear Strips, Inner	WST-0003-LCSGM	4	8
Wear Strips, Outer	WST-0002-LCSTM	8	16
Wear Strip Retainer	WST-0005-LCSTM	8	16
Cylinder Assembly	CSY-0067-LCSDM	0	2
Linear Bearing	G-441	0	2

PARTS ORDERING PROCEDURE

Refer to "How to Order Parts," pages A - 1 and A - 2.