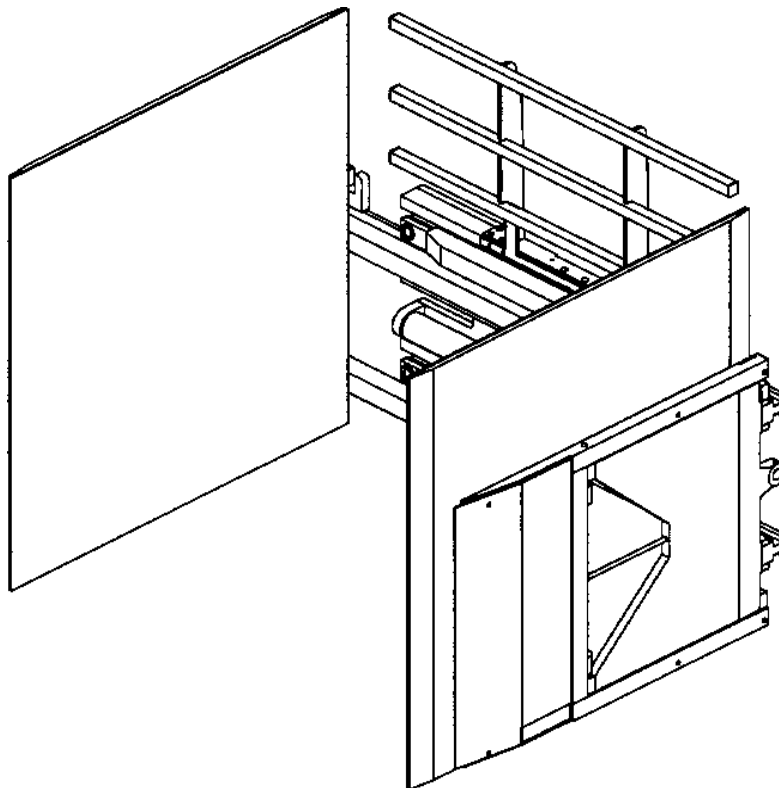


Long Reach[®]

Manufacturing Co.

PARTS MANUAL

ARTICULATING CARTON CLAMP



MODEL NUMBER: LCC35NSB

SERIAL NUMBER: _____

FACTORY ORDER NO: _____

SHIPMENT DATE: _____

INDEX

ARTICULATING CARTON CLAMP

A. HOW TO ORDER PARTS

| | |
|----------------------------|-------|
| How to Order Parts | A - 1 |
| Model Identification | A - 2 |

B. USER'S SAFETY TIPS

| | |
|------------------------|-------|
| Safety Tips | B - 1 |
| Load Handling | B - 2 |
| Load Positioning | B - 3 |

C. MECHANICAL PARTS GROUP

| | |
|---------------------------------------|-------|
| Complete Assembly | C - 1 |
| Body Assembly | C - 2 |
| Arm Assembly | C - 3 |
| Arm, Cover, Pad Chart | C-3a |
| Backrest Assembly | C - 4 |
| Mounting Kit Assembly-Class II | C - 5 |
| Mounting Kit Assembly-Class III | C-5a |
| Quick Change Hook Assembly | C - 6 |

D. HYDRAULIC PARTS GROUP

| | |
|--|-------|
| Cylinder Assembly | D - 1 |
| Side Shift Hydraulics Assembly | D - 2 |
| Hydraulics Schematic | D - 3 |
| 3-Position Relief Valve (Option) | D - 4 |
| Solenoid Valve (Option) | D - 5 |

E. SPARE PARTS GROUP

| | |
|-------------------------------|-------|
| Recommended Spare Parts | E - 1 |
| Spare Parts Log | E - 2 |
| Parts Manual Order Form | E - 3 |

HOW TO ORDER PARTS

For quick, professional, and courteous service when you need parts for your equipment, here is what you should do:

1. Locate the model identification tag on the equipment.
2. Make a note of the model number and serial number.
3. Refer to the appropriate pages in the parts manual for the correct part numbers and quantities.
4. Call your local **Long Reach/Brudi** dealer from whom you purchased the clamp.
5. If you are unable to identify the selling dealer, contact **Long Reach/Brudi** with the serial number. **Long Reach/Brudi** will identify the dealer for you.

For handy reference, write the name of your Long Reach dealer here:

| | |
|-------------|----------------|
| DEALER NAME | _____ |
| ADDRESS | _____ _____ |
| PHONE | _____ |
| CONTACT | _____ |

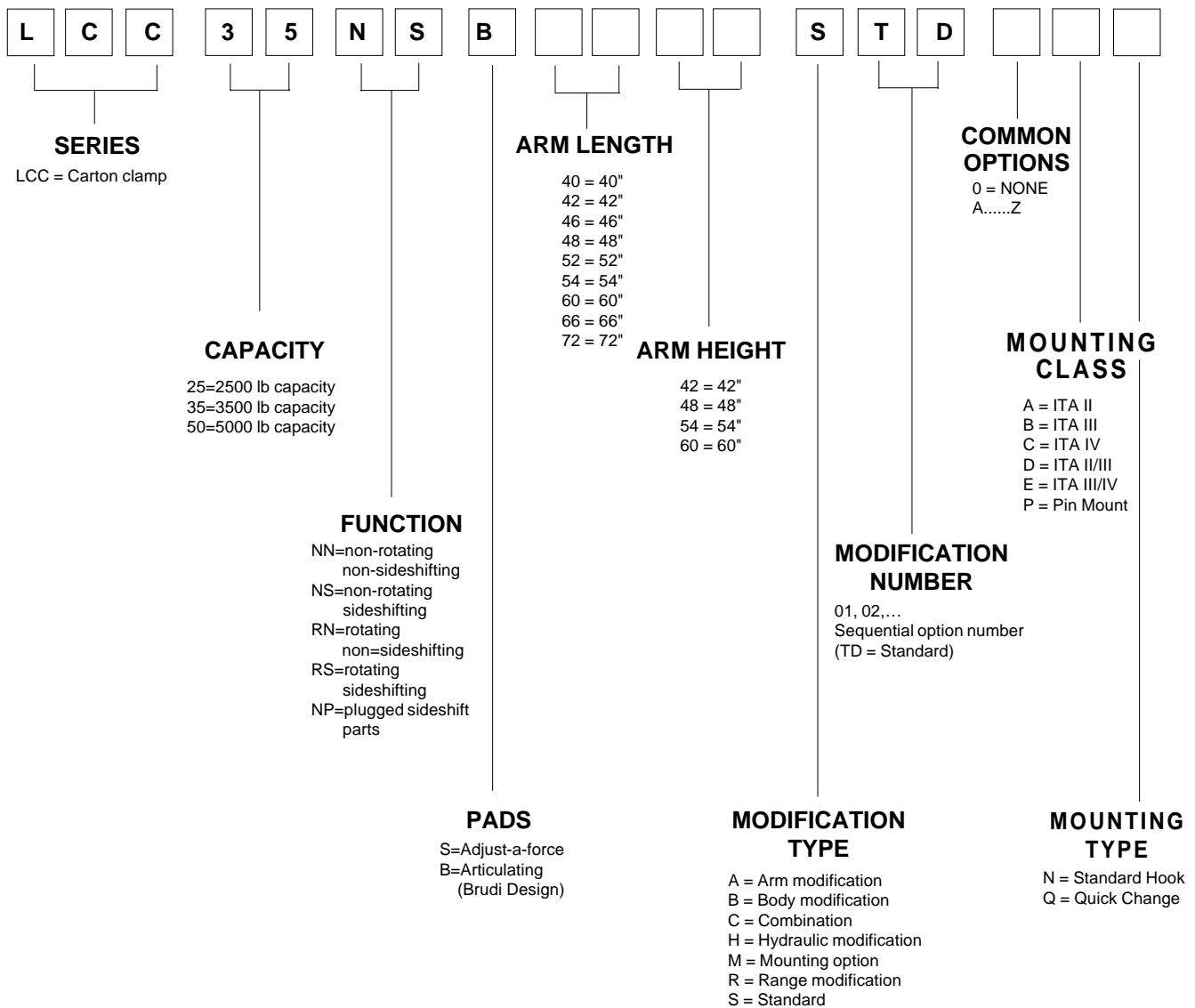
Long Reach/Brudi Parts Department
12300 Amelia Drive
Houston, TX 77045
Parts Phone:(800) 547-3174
Fax:(713) 433-9710

A-1

MODEL NUMBER DESCRIPTION

Each clamp is identified by a model number and a serial number located on the name plate attached to the unit prior to shipment.

Before ordering replacement parts for any unit, be sure to use the correct parts list for your model number. Both model number and serial number must be given to ensure that the correct parts are ordered.



USER'S SAFETY TIPS

Safety is Everyone's Responsibility

Whether you are new on the job or a seasoned veteran, these safety tips may prevent injury to you, to others, or to the materials you are handling. Always be alert, watch out for others, and follow these suggestions:

Attachments Handle Material - Not People.

Safety starts with common sense.

1. **Never** stand on top of material being raised, lowered, or transported.
2. **Never** use the attachment or its load to support a man-carrying device.
3. **Never** position an attachment or load over people.
4. **Never** leave an attachment or load in an elevated position.



**NEVER STAND
UNDER
ATTACHMENT**



**NEVER STAND
BETWEEN
CLAMPING SURFACES**

5. **Never** stand in front of or beside an attachment that is being operated. Never allow another person to approach an attachment that is being operated.
6. **Always** operate an attachment from the operator's seat, never while standing next to the lift truck.
7. **Never** reach through the mast of the truck. Keep all parts of the body within the driver's compartment.
8. **Do not** allow riders on the truck at any time.
9. **Never** leave a lift truck unattended without lowering the load to the floor, setting the brake, and turning the truck off.
10. **Never** transport a load that impedes full vision forward. Use reverse.
11. **Watch** for pedestrians when transporting. Sudden stops can dislodge all or part of a load.

B-1

USER'S SAFETY TIPS

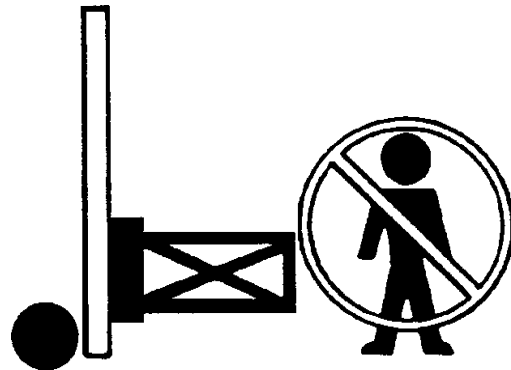
Load Handling

1. **All** operators must be trained and qualified.
2. **Never** overload the attachment. Refer to the attachment nameplate for the rated capacity of the attachment. Refer to the nameplate of the truck for the net working capacity of the truck and attachment. Observe the lower of the two capacities. The attachment capacity is the structural rating of the attachment and should not be exceeded. Net working capacity is the truck manufacturer's rating of the truck/attachment combination.



3. **Never** use a load to support or move another object. Doing so can easily exceed the holding capacity of the attachment, causing loss of the load.
4. **Never** lift, lower, side shift, pivot, rotate, or tilt loads while traveling. Repositioning loads while traveling affects the stability of the truck and may impede vision or clearances.

5. **Never** speed or race a lift truck. High speed adversely affects the stability and steering of the lift truck.
6. **Do not** use an attachment to open or close boxcar doors. Doing so can severely damage the attachment and cause loss of warranty. Using damaged roll clamp pads can cause severe paper damage.



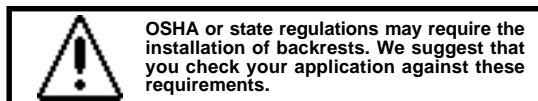
7. **Do not** carry loose items or rolls on top of a load.
8. **Never** allow anyone under a load or under the carriage.
9. **Never** use chains, cables, or other devices in conjunction with an attachment for load handling.
10. **Report** all damaged or faulty equipment. Do not operate a lift truck or an attachment until repairs have been made.
11. **Never** clamp wood, skids, pallets, or any other incompatible load with an attachment.

USER'S SAFETY TIPS

12. **Do not** carry more than one paper roll with a roll clamp unless the clamp is specifically designed for multiple rolls.
13. **Travel** slowly around corners. Sound horn on blind corners. Be careful of tail swing and overhead clearances. Watch in all directions. Avoid sudden stops.
14. **Do not** exceed the specified maximum operating pressure for the attachment. To do so can severely damage the attachment and cause loss of warranty.

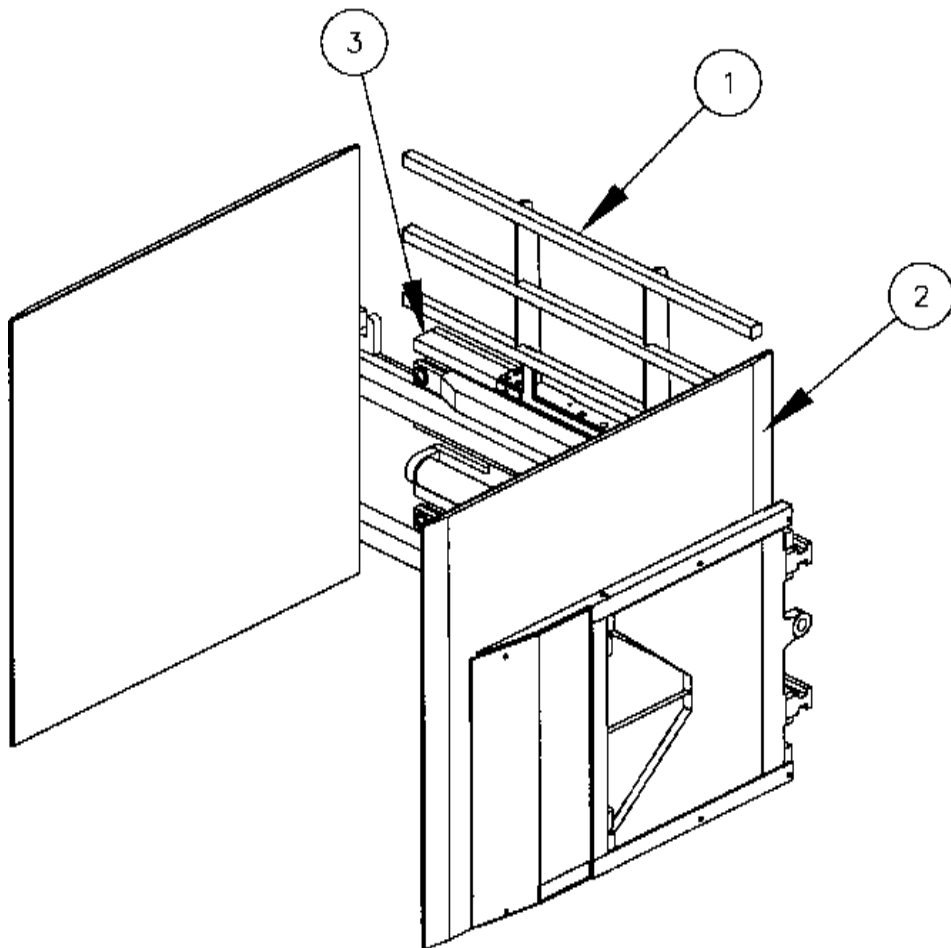
Load Positioning

1. **Always** carry loads as close to the floor as possible, consistent with the surface being traversed. Scraping or bumping the floor surface with the load or the attachment can severely damage the attachment and cause product damage. The mast should be tilted backward.
2. **Always** keep the load positioned as close as possible to the horizontal center of the lift truck.
3. **Always** back down ramps or inclines. Driving forward down a ramp or incline with a clamped load will lessen the stability of the truck.
4. **Do not** cross dock boards or dock levelers with the attachment or carriage fully lowered. Ramming the front or rear of the attachment against a dock board can cause severe damage.
5. **Always** check loads to be handled. If they are broken, unbalanced, loose, or too heavy, advise a supervisor or properly correct the situation prior to handling.
6. **Limit** lift truck movement to a minimum when high stacking. Limit sideshift movement to a minimum when high stacking.
7. **Always** be observant when high stacking. Look for poorly stacked loads, overhead obstacles, broken cartons, or damaged products in the stack.
8. **Always** carry cylindrically shaped loads in the vertical position, not the horizontal.
9. **Always** clamp a paper roll with the contact pads of the paper roll clamp, not the arm or arm base.
10. **Never** rotate a load that is off center to the centerline of rotation. Severe damage to the rotator could result.
11. **Always** position the short arm pad of a paper roll clamp against the roll before clamping to prevent lateral movement of the roll while the roll is being clamped.
12. **Always** check the attachment for proper fit and engagement of the truck carriage.



MECHANICAL PARTS GROUP

COMPLETE ASSEMBLY

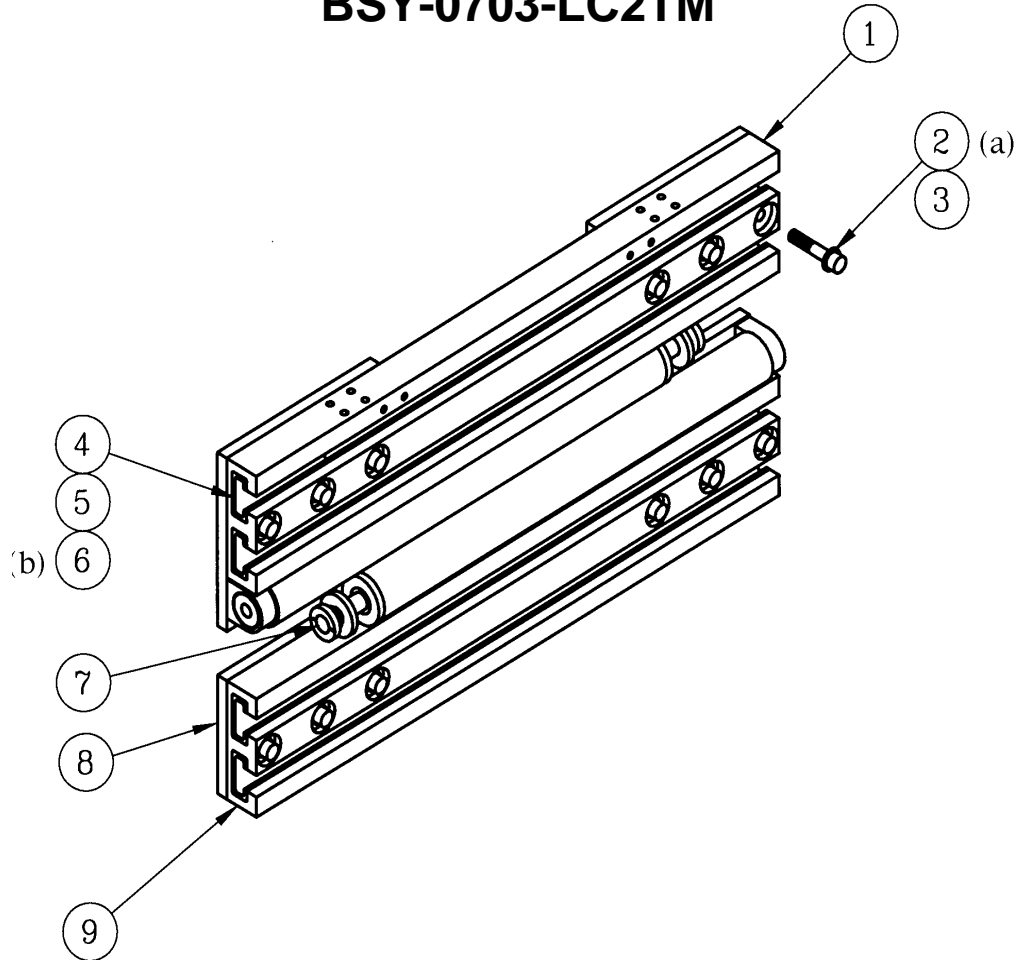


| ITEM NO. | DESCRIPTION | NO. REQ'D | PART NO. |
|----------|-------------------|-----------|----------|
| 1. | Backrest Assembly | — | Page C-4 |
| 2. | Arm Assembly | — | Page C-3 |
| 3. | Body Assembly | — | Page C-2 |

C-1

MECHANICAL PARTS GROUP

BODY ASSEMBLY BSY-0703-LC2TM



| ITEM NO. | DESCRIPTION | NO. REQ'D | PART NO. |
|----------|--|-----------|---------------------------|
| 1. | Body Extrusion, Top | 1 | BSN-0208-LC2TM |
| 2. | Capscrew <i>(See Note a)</i> | 12 | AA-41 |
| 3. | Lockwasher | 12 | DA-47 |
| 4. | Wearstrip, Outer | 8 | WST-0002-LCSTM |
| 5. | Wearstrip, Inner | 4 | WST-0003-LCSGM |
| 6. | Wearstrip Retainer <i>(See Note b)</i> | 8 | WST-0005-LCSTM |
| 7. | Cylinder | 2 | <i>See Cylinder Assy.</i> |
| 8. | Body Strap Group | 2 | STP-0337-LC2TM |
| 9. | Body Extrusion, Bottom | 1 | BSN-0213-LC2TM |
| | Body Assembly | 1 | BSY-0703-LC2TM |

NOTES:

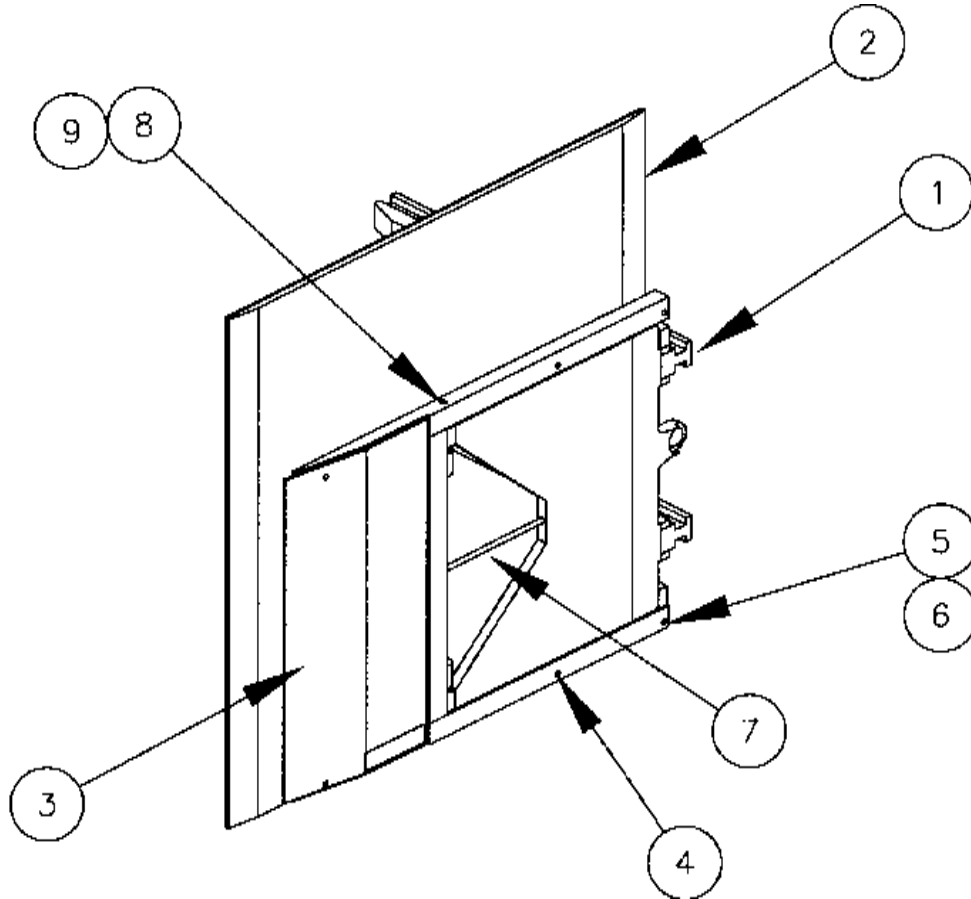
(a) Torque: 100 ft•lbs.

(b) Prime & Loc-Tite®, No Torque.

C-2

MECHANICAL PARTS GROUP

ARM ASSEMBLY



| ITEM NO. | DESCRIPTION | NO. REQ'D | PART NO. |
|----------|--------------|-----------|------------------|
| 1. | Arm Weldment | 2 | <i>Page C-3a</i> |
| 2. | Arm Pad | 2 | <i>Page C-3a</i> |
| 3. | Support Arm | 2 | <i>Page C-3a</i> |
| 4. | Capscrew | 8 | 96G-0816 |
| 5. | Setscrew | 2 | 39G-0828 |
| 6. | jam Nut | 2 | CB-23 |
| 7. | Spring Bar | 2 | 086568-15.50 |
| 8. | Capscrew | 4 | A-257 |
| 9. | Nut | 4 | C-108 |

MECHANICAL PARTS GROUP

ARM, COVER, PAD CHARTS

HOW TO USE THE CHART

1. Locate your model number on the name plate tag.
2. Locate the fields which correspond to pad length and height. *(See Page A-2)*
Ex.: LCC35NSB4654STD0AQ 46: Pad Length 54: Pad Height
3. For Chart A - Arm Weldments and Supports use Pad Length and Pad Height *(REF)*
4. For Chart B - Pads Use Pad Length and Pad Height

CHART A - ARM WELDMENTS

| PAD LENGTH- (PAD HEIGHT UNDER 60") | ARM | | SUPPORT | |
|--|----------------|----------------|----------------|----------------|
| | Right | Left | Right | Left |
| 38" | GCN-0776-LC2TM | GCN-0777-LC2TM | GCN-0778-LC2TM | GCN-0779-LC2TM |
| 40" | GCN-0591-LC2TM | GCN-0604-LC2TM | GCN-0623-LC2TM | GCN-0622-LC2TM |
| 42" | GCN-0593-LC2TM | GCN-0606-LC2TM | GCN-0625-LC2TM | GCN-0624-LC2TM |
| 44" | GCN-0595-LC2TM | GCN-0608-LC2TM | GCN-0627-LC2TM | GCN-0626-LC2TM |
| 46" | GCN-0597-LC2TM | GCN-0610-LC2TM | GCN-0629-LC2TM | GCN-0628-LC2TM |
| 48" | GCN-0599-LC2TM | GCN-0612-LC2TM | GCN-0631-LC2TM | GCN-0630-LC2TM |
| 52" | GCN-0718-LC2TM | GCN-0717-LC2TM | GCN-0714-LC2TM | GCN-0715-LC2TM |
| 54" | GCN-0600-LC2TM | GCN-0613-LC2TM | GCN-0633-LC2TM | GCN-0632-LC2TM |
| 72" | GCN-0695-LC2TM | GCN-0696-LC2TM | GCN-0692-LC2TM | GCN-0693-LC2TM |

| (PAD HEIGHT 60" & OVER) | ARM | | SUPPORT | |
|----------------------------|----------------|----------------|----------------|----------------|
| 54" | GCN-0601-LC2TM | GCN-0614-LC2TM | GCN-0637-LC2TM | GCN-0636-LC2TM |
| 66" | GCN-0729-LC2TM | GCN-0730-LC2TM | GCN-0733-LC2TM | GCN-0732-LC2TM |

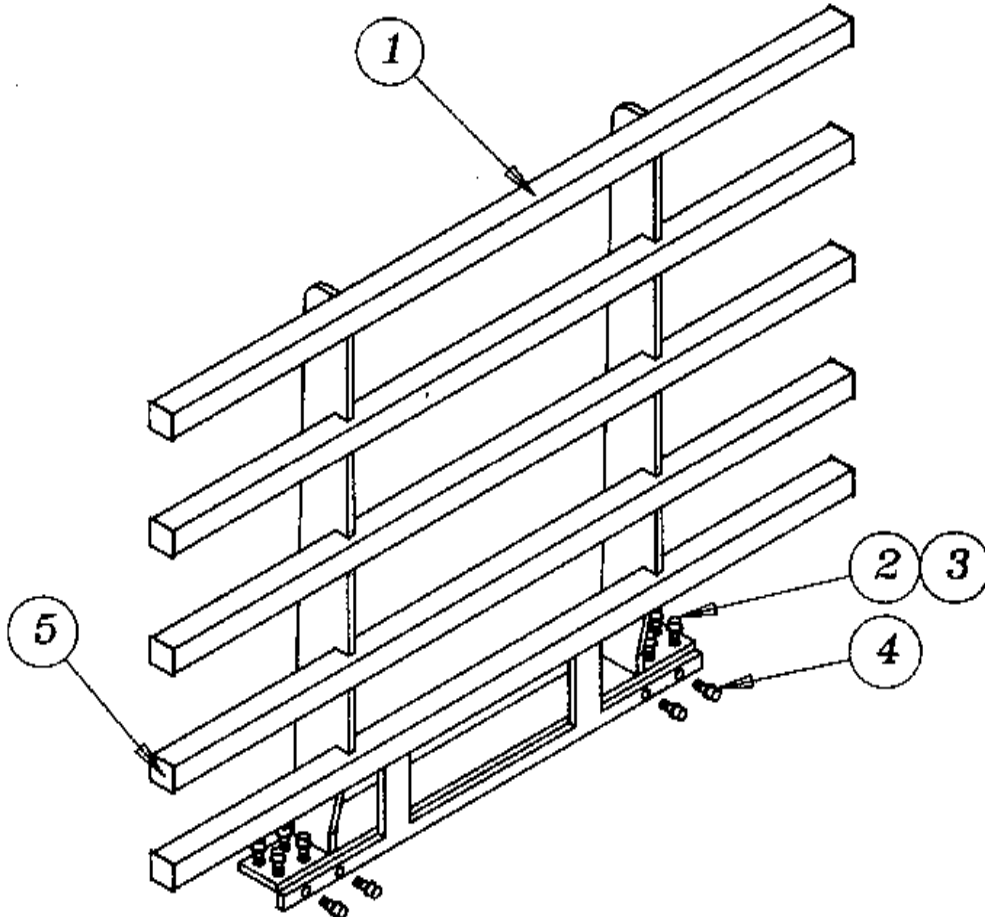
CHART B - ARM PADS

| LENGTH x HEIGHT | NUMBER | LENGTH x HEIGHT | NUMBER |
|-----------------|-----------|-----------------|----------------|
| 38L x 48H | 447166.57 | 52L x 48H | 447166.22 |
| 40L x 48H | 447166.1 | 54L x 48H | 447166.6 |
| 42L x 48H | 447166.2 | 54L x 54H | 447166.41 |
| 44L x 48H | 447166.3 | 54L x 60H | 447166.26 |
| 46L x 48H | 447166.4 | 66L x 60H | 447166.24 |
| 48L x 48H | 447166.5 | 72L x 42H | PCN-0144-LC2TM |

C-3a

MECHANICAL PARTS GROUP

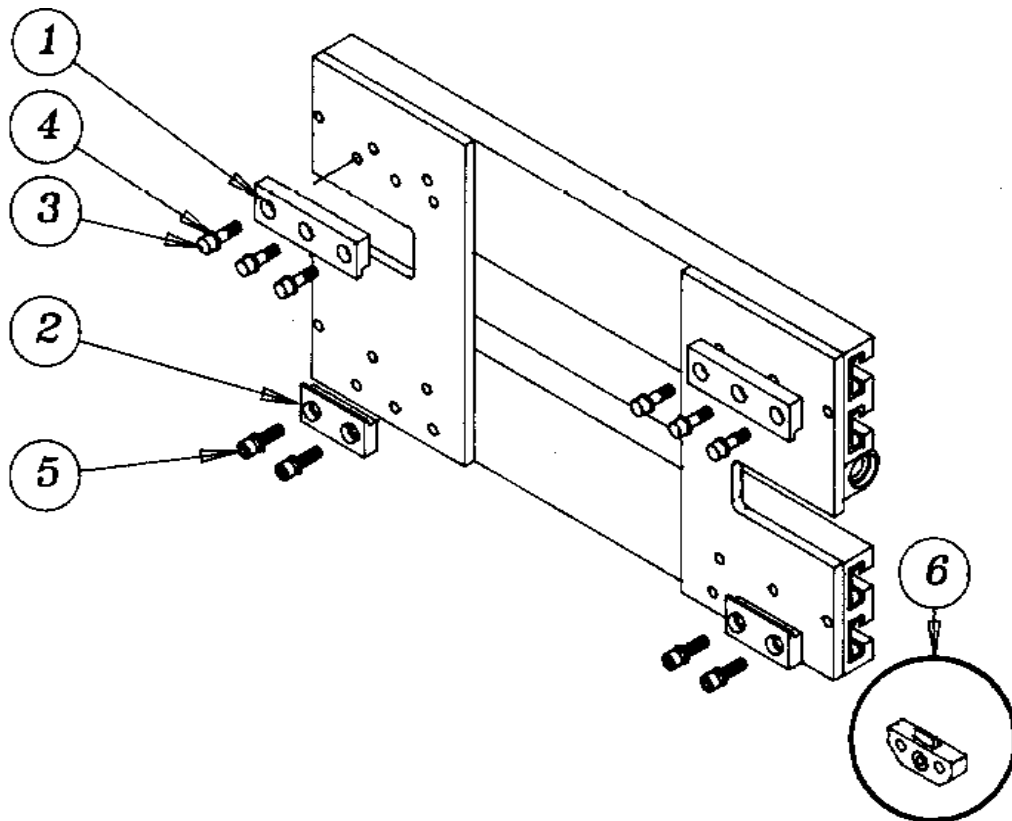
BACKREST ASSEMBLY



| ITEM NO. | DESCRIPTION | PART NO. | PAD HEIGHTS - QUANTITY | | |
|----------|-------------|----------------|------------------------|----------|----------|
| | | | 48" HIGH | 42" HIGH | 60" HIGH |
| 1. | Backrest | BKR-0435-LC2TM | 1 | 1 | — |
| — | — | BKR-0438-LC2TM | — | — | 1 |
| — | — | BKR-0443-LC2TM | — | 1 | — |
| 2. | Capscrew | AA-27 | 8 | 8 | 8 |
| 3. | Lockwasher | D-6 | 8 | 8 | 8 |
| 4. | Capscrew | A-34 | 4 | 4 | 4 |
| 5. | End Cap | M-293 | 6 | 6 | 8 |

MECHANICAL PARTS GROUP

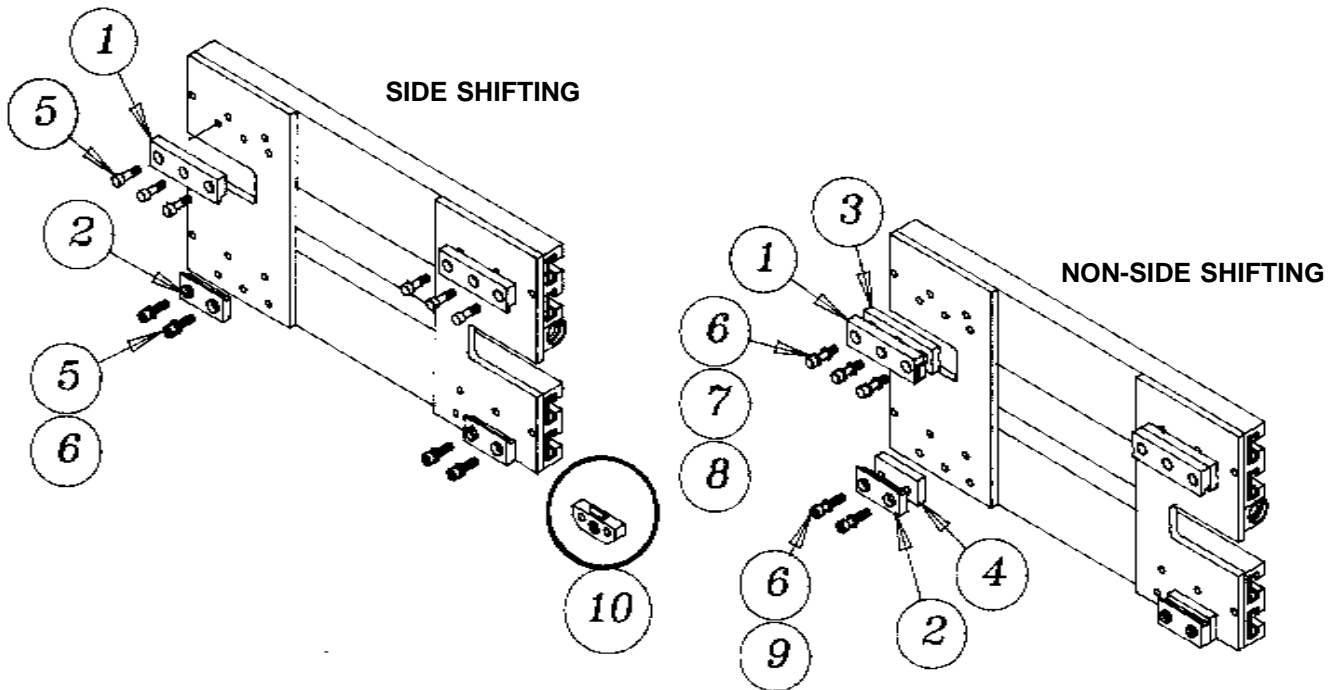
MOUNTING KIT ASSEMBLY CLASS II



| ITEM NO. | DESCRIPTION | NO. REQ'D | PART NO. |
|----------|----------------------|-----------|-----------------|
| 1. | Top Hook, Left | 1 | HKS-0188-LC2TM |
| | Top Hook, Right | 1 | HKS-0001-LCSSM |
| 2. | Bottom Hook | 2 | XO-209 |
| 3. | Capscrew-Top Hook | 6 | AA-85 |
| 4. | External Lockwasher | 10 | DAB-12 |
| 5. | Capscrew-Bottom Hook | 4 | AA-85 |
| 6. | Quick Change Hook | - | <i>Page C-6</i> |

MECHANICAL PARTS GROUP

MOUNTING KIT ASSEMBLY CLASS III

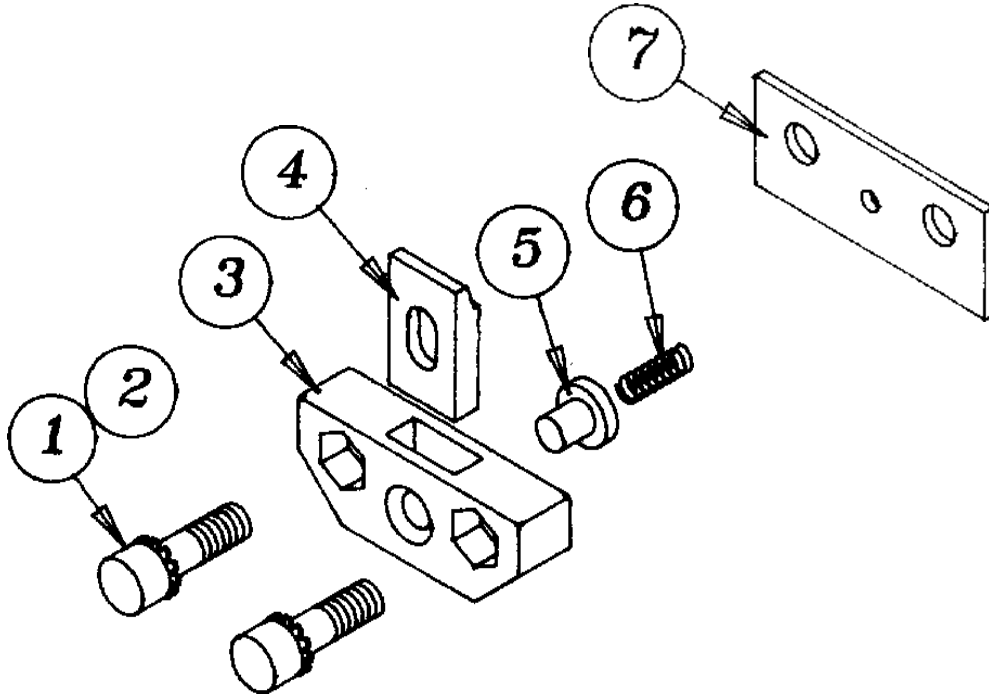


| ITEM NO. | DESCRIPTION | QTY. | | PART NO. | |
|----------|----------------------|------------|------------|------------------|-------------------|
| | | | | SIDE SHIFTING | NON-SIDE SHIFTING |
| 1. | Top Hook, Left | 1 | 1 | HKS-0193-LC2TM | HKS-0193-LC2TM |
| | Top Hook, Right | 1 | 1 | HKS-0002-LCSSM | HKS-0002-LCSSM |
| 2. | Bottom Hook | 2 | 2 | HKS-0003-LCSSM | HKS-0003-LCSSM |
| 3. | Spacer, Top Hook | <i>N/A</i> | 2 | <i>Not Req'd</i> | SPS-0290-LCCTM |
| 4. | Spacer, Bottom Hook | <i>N/A</i> | 2 | <i>Not Req'd</i> | SPS-0291-LCCTM |
| 5. | Capscrew | 10 | <i>N/A</i> | AA-37 | <i>N/A</i> |
| 6. | External Lockwasher | 4 | 10 | DAB-12 | DAB-12 |
| 7. | Lockwasher | <i>N/A</i> | 6 | <i>N/A</i> | D-7 |
| 8. | Capscrew-Top Hook | <i>N/A</i> | 6 | <i>N/A</i> | AA-41 |
| 9. | Capscrew-Bottom Hook | <i>N/A</i> | 4 | <i>N/A</i> | AA-100 |
| 10. | Quick Change Hook | - | - | <i>Page C-6</i> | <i>Page C-6</i> |

C-5a

MECHANICAL PARTS GROUP

QUICK CHANGE HOOK ASSEMBLY



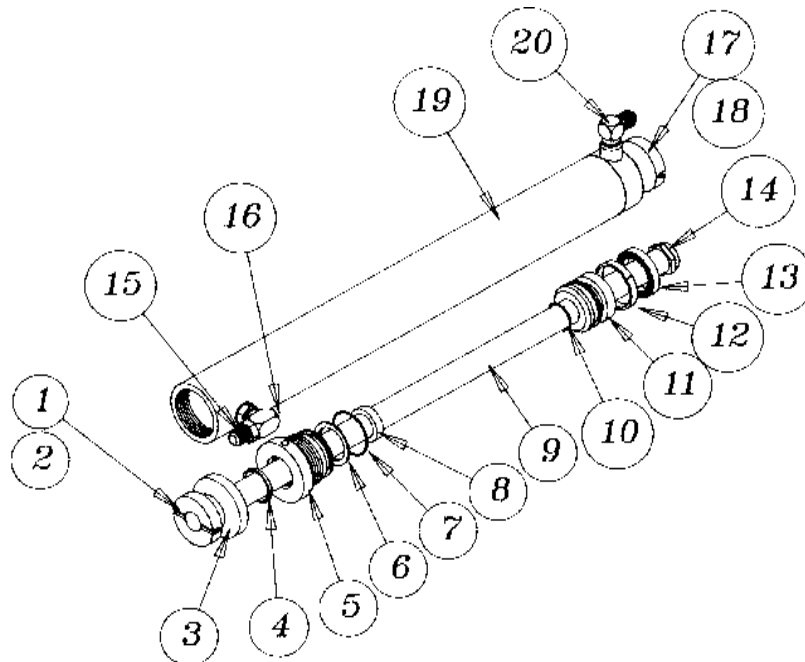
| ITEM NO. | DESCRIPTION | QTY. | | PART NO. |
|----------|---------------------|----------|-----------|----------|
| | | CLASS II | CLASS III | |
| 1. | Capscrew | 4 | — | AA-85 |
| | Capscrew | — | 4 | AA-37 |
| 2. | Lockwasher | 4 | 4 | DAB-12 |
| 3. | Hook Body | 2 | 2 | RXO-201 |
| 4. | Hook Slide | — | — | — |
| — | • Class II | 2 | — | RXO-202 |
| — | • Class III | — | 2 | 15607-2B |
| 5. | Push Button | 2 | 2 | RXO-203 |
| 6. | Spring | 2 | 2 | N-235 |
| 7. | Shim | — | 2 | XO-210 |
| — | *Hook Kit Class II | 1 | — | QCHA-LC2 |
| — | *Hook Kit Class III | — | 1 | QCHB-LC2 |

* Kit contains two Hook Assemblies as shown.

C-6

HYDRAULIC PARTS GROUP

CYLINDER ASSEMBLY CSY-0333-LC2DM



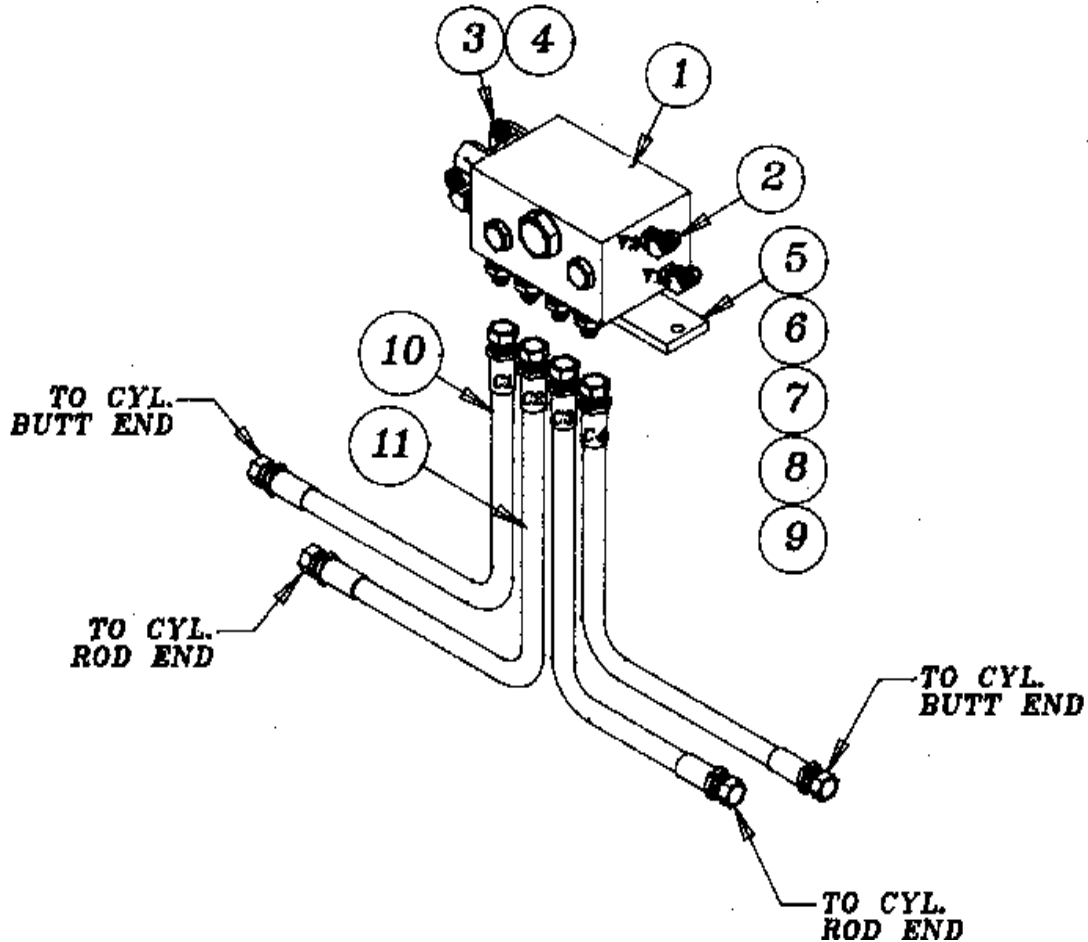
| ITEM NO. | DESCRIPTION | NO. REQ'D | PART NO. |
|----------|--------------------------------|-----------|----------------|
| 1. | Flush Nut | 1 | CFN-0006-LC2TM |
| 2. | Cotter Pin | 1 | E-7 |
| 3. | Spacer Washer | 1 | SPS-0368-LC2TM |
| 4. | Wiper Ring | 1 | *KB-169 |
| 5. | Stuffing Box | 1 | CSB-0018-LC2TM |
| 6. | Backup Ring | 1 | *K-182 |
| 7. | O Ring | 1 | *K-16 |
| 8. | Rod Seal | 1 | *KB-168 |
| 9. | Cylinder Rod | 1 | CRD-0269-LC2DM |
| 10. | O Ring | 1 | *K-42 |
| 11. | Piston | 1 | CPN-0024-LC2TM |
| 12. | Piston Bearing | 1 | *KB-166 |
| 13. | Piston Seal | 1 | *KB-113 |
| 14. | Flex Locknut | 1 | O-86 |
| 15. | Straight Adapter | 1 | O-81 |
| 16. | Plug | 1 | HF-31 |
| 17. | Flushr Nut | 1 | CFN-0005-LC2TM |
| 18. | Cotter Pin | 1 | E-16 |
| 19. | Cylinder Tube | 1 | CTB-0747-LC2DM |
| 20. | 90° Fitting | 1 | O-265 |
| - | Cylinder Assembly | - | CSY-0333-LC2DM |
| - | Packing Kit <i>(Not Shown)</i> | - | HKT-0035-LC2DM |

NOTE: Included in packing kit. Kit includes enough to repack 2 cylinders.

D-1

HYDRAULIC PARTS GROUP

SIDE SHIFT HYDRAULIC ASSEMBLY

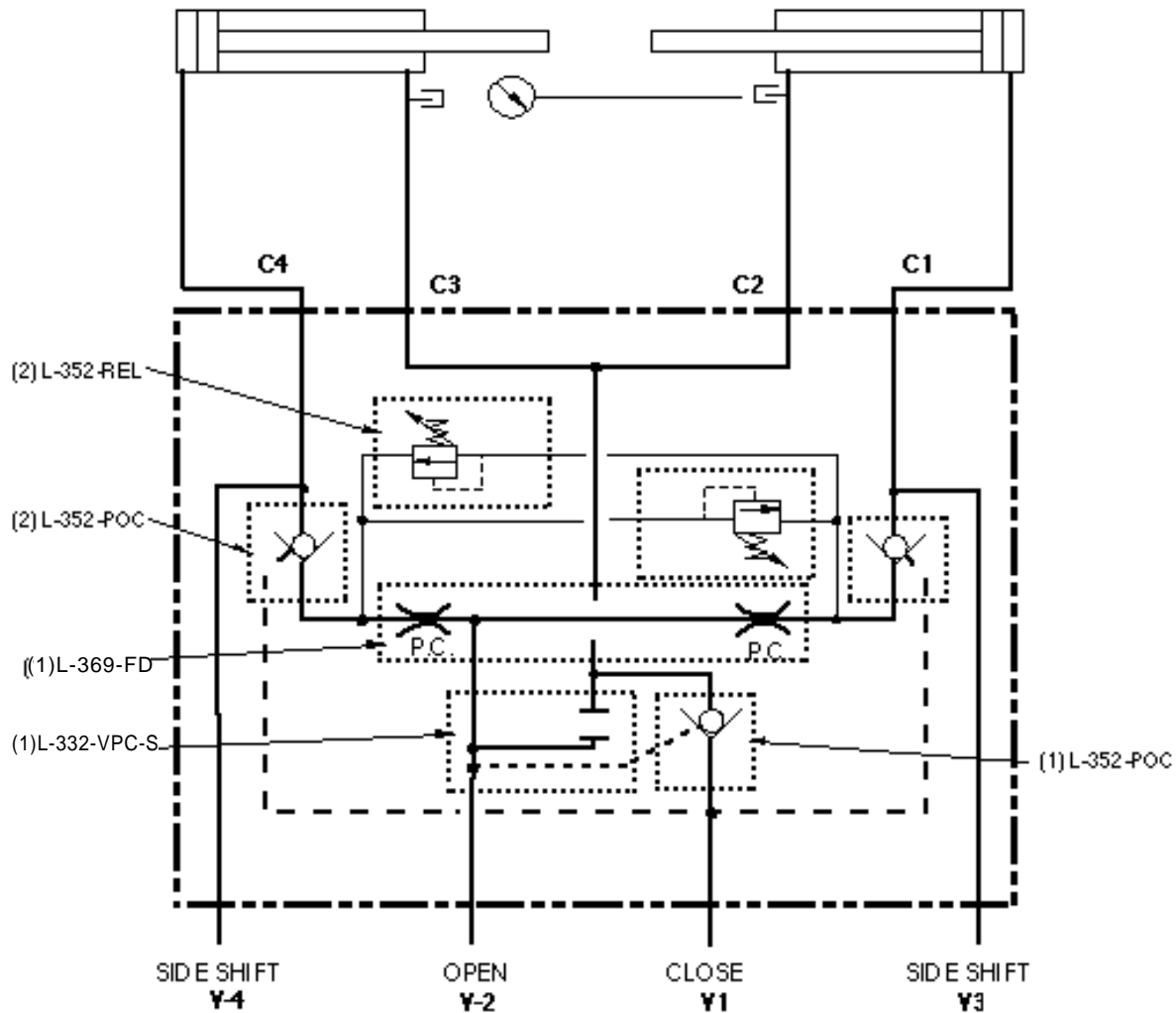


| ITEM NO. | DESCRIPTION | NO. REQ'D | PART NO. |
|----------|--------------------|-----------|----------------|
| 1. | Valve | 1 | L-369-REG |
| 2. | 45° Fitting | 3 | O-313 |
| 3. | 45° Swivel Fitting | 1 | O-331 |
| 4. | Straight Fitting | 5 | O-342 |
| 5. | Valve Plate | 1 | HVP-0151-LC2TM |
| 6. | Capscrew | 2 | A-210 |
| 7. | Capscrew | 1 | A-32 |
| 8. | Lockwasher | 1 | D-4 |
| 9. | Roll Pin | 1 | ED-5 |
| 10. | Hose Assembly | 2 | O-118 |
| 11. | Hose Assembly | 4 | O-284 |

D-2

HYDRAULIC PARTS GROUP

HYDRAULIC SCHEMATIC: REGENERATIVE SIDE SHIFTING VALVE WITH INTERNAL RELIEF P/N L-369



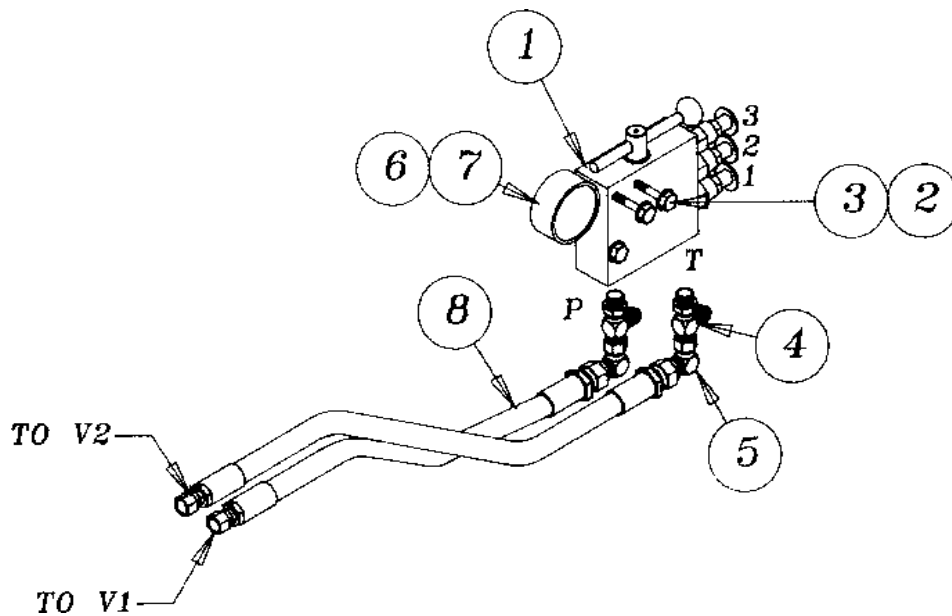
NOTES:

| | | | |
|--|-----------------------|--|--------------------------------|
| | FLOW DIVIDER SECTION | | TEST PORT CONNECTION |
| | P.C. | | BLOCKED CIRCUIT |
| | PILOT SECTION | | PILOT OPERATED CHECK CARTRIDGE |
| | RELIEF SECTION | | CHECK CARTRIDGE |
| | REPLACABLE CARTRIDGES | | |



HYDRAULIC PARTS GROUP

3-POSITION RELIF VALVE

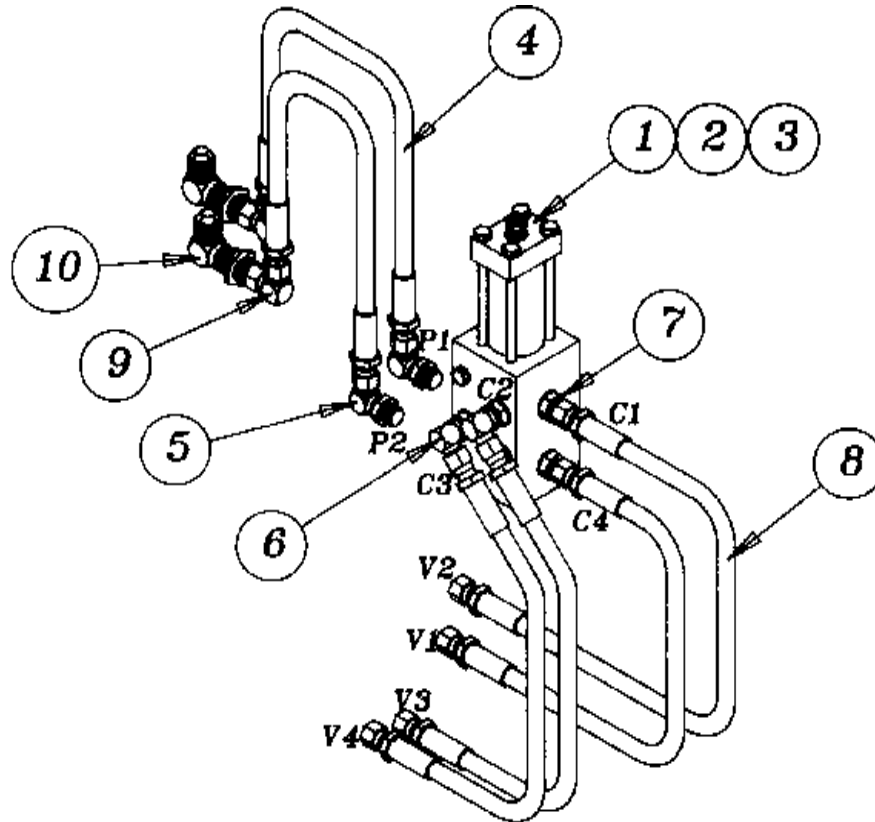


| ITEM NO. | DESCRIPTION | NO. REQ'D | PART NO. |
|----------|--------------------------------------|-----------|----------|
| 1. | Relief Valve | 1 | L-354 |
| 2. | Capscrew | 3 | AB-6 |
| 3. | Lockwasher | 3 | D-2 |
| 4. | Tee Fitting | 2 | O-456 |
| 5. | Swivel 90° Fitting | 2 | O-318 |
| 6. | Gauge <i>(Optional)</i> | 1 | L-335 |
| 7. | Straight Adapter <i>(With Gauge)</i> | 1 | O-373 |
| — | • Plug <i>(Without Gauge)</i> | 1 | O-309 |
| 8. | Hose Assembly | 2 | O-211 |

D-4

HYDRAULIC PARTS GROUP

SOLENOID VALVE ASSEMBLY



| ITEM NO. | DESCRIPTION | NO. REQ'D | PART NO. |
|----------|----------------------|-----------|----------|
| 1. | Solenoid Valve | 1 | — |
| — | •12V | — | L-207 |
| — | •24V | — | L-207-2 |
| — | •36V | — | L-207-3 |
| — | •48V | — | L-207-4 |
| 2. | Capscrew | 2 | AB-188 |
| 3. | Lockwasher | 2 | D-4 |
| 4. | Hose Assembly | 2 | O-150 |
| 5. | 90° Fitting | 2 | O-355 |
| 6. | 90° Fitting | 2 | O-265 |
| 7. | Straight Fitting | 2 | O-266 |
| 8. | Hose Assembly | 4 | O-211 |
| 9. | 90° Swivel Fitting | 2 | O-54 |
| 10. | 90° Bulkhead Adapter | 2 | O-306 |

D-4

SPARE PARTS GROUP

RECOMMENDED SPARE PARTS

| DESCRIPTION | PART NO. | NO. REQ'D PER NO. OF UNITS IN SERVICE | |
|-----------------------------------|----------------|---------------------------------------|--------|
| | | 1 - 5 | 6 - 10 |
| Cylinder Assembly | CSY-0333-LC2BM | 0 | 2 |
| Cylinder Packing Kit | HKT-0035-LC2DM | 1 | 2 |
| Wear Strips | — | — | — |
| Inner | WST-0003-LCSGM | 4 | 8 |
| Outer | WST-0002-LCSTM | 8 | 16 |
| Wear Strip Retainer | WST-0005-LCSTM | 8 | 8 |
| Sideshifting Reg. Valve | L-369-REG | 0 | 1 |
| Check Cartridge | L-363-C | 1 | 2 |
| Vented P.O. Check Cartridge | L-369-VPC-S | 1 | 2 |
| Relief Cartridge | L-352-REL | 2 | 4 |
| Flow Divider Cartridge | L-369-FD | 1 | 2 |
| P.O. Check Cartridge | L-352-POC | 2 | 4 |
| Seal Kit – Check Cartridge | L-330-SK | 1 | 2 |
| Seal Kit – Relief Cartridge | L-269-1 | 2 | 4 |
| Seal Kit – Flow Divider Cartridge | L-277-2 | 1 | 2 |

PARTS ORDERING PROCEDURE

Refer to "How to Order Parts," pages A - 1 and A - 2.

WARRANTY

Long Reach/Brudi warrants its new lift truck products for one hundred eighty (180) days from the date of delivery to the original user. This warranty is limited to the replacement of such parts as Long Reach/Brudi shall inspect and find, at its sole discretion, to be defective in workmanship or material.

Long Reach/Brudi products are warranted only if Long Reach/Brudi applicable installation and use instructions have been carefully followed. This warranty does not extend to problems resulting from normal or accelerated wear, unauthorized alterations, improper installation, abuse, or lack of proper maintenance. Prior written authorization must be obtained for repairs other than the removal of defective parts and replacement with parts supplied by Long Reach/Brudi.

It is specifically agreed that the liability of Long Reach/Brudi under all guarantees or warranties, either expressed or implied, is strictly limited to those terms as hereinbefore provided. Long Reach/Brudi assumes no responsibility for loss, damage, or injury, either direct or consequential, including that based on strict liability, resulting from or occasioned by possession or use of its products.

On equipment of other than Long Reach/Brudi manufacture, but supplied by it either as a separate unit or as an integral part of one of its products, the warranty of the original manufacturer shall apply. *There are no warranties that extend beyond those stated on the face of this agreement.*

Long Reach[®]
Manufacturing Co.

Brudi[®]

P.O. Box 45069 - Houston, TX 77245-0069

SAFE DELIVERY POLICY

We **DO NOT** guarantee safe delivery. Please read the following policy carefully.

1. Our terms of sale are F.O.B. our factory - **the responsibility for damage in transit is the carriers'** whether it be visible or concealed damage.
2. Inspect this shipment immediately. Insist that visible damages be indicated on your copy of the freight bill.
3. Open any boxes as soon as possible, preferably within 15 days of delivery and **inspect for concealed damages.**
4. In case of damage notify delivering carrier immediately requesting that inspection be made. Place a phone call to the delivery carrier and confirm with written request, holding copy of request for claim purposes.
5. We have taken every precaution to ensure safe arrival, but our responsibility ceased when the shipment was turned over to the carrier.
6. Claims for damages must be made by you to the carrier within 15 days of receipt of delivery.

Return Goods

1. Do not return any product without our authorization.
2. Call customer Service and obtain a return authorization number.
3. Special and custom-manufactured items cannot be returned.
4. Return merchandise will not be accepted by us from the carrier unless it is returned freight prepaid within ten (10) days of the return authorization date and is identified with the RA assigned.

Long Reach Manufacturing - Houston, Texas. For new equipment, parts, technical service, warranty and return authorization, call 1-800-547-3174 or (713) 434-3400. Fax: (713) 433-9710.

Rol-Lift Corporation- Little Rock, Arkansas. For new equipment, parts and return authorizations on new equipment call 1-800-547-3174 or (713) 434-3400. Fax: (713) 433-9710. For technical service, warranty on new equipment and parts, and return authorizations for warranty items call (501) 227-4200. Fax: (501) 227-9509.