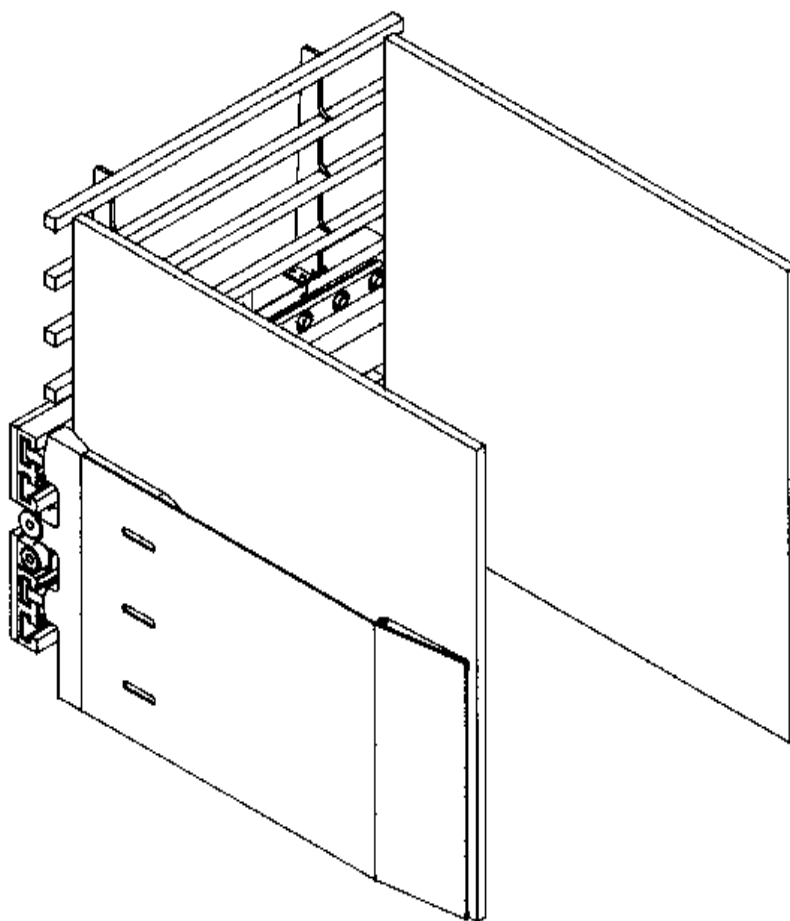


Long Reach[®] ***Manufacturing Co.***

PARTS MANUAL

ADJUST-A-FORCE CARTON CLAMP



MODEL NUMBER: LCC35NSS
SERIAL NUMBER: _____
FACTORY ORDER NO.: _____
SHIPMENT DATE: _____

INDEX

ADJUST-A-FORCE CARTON CLAMP

A. HOW TO ORDER PARTS

How to Order Parts	A - 1
Model Identification	A - 2

B. USER'S SAFETY TIPS

Safety Tips	B - 1
Load Handling	B - 2
Load Positioning	B - 3

C. MECHANICAL PARTS GROUP

Complete Assembly	C - 1
Body Assembly	C - 2
Arm Assembly	C - 3
Arm, Cover, Pad Chart	C-3a
Backrest Assembly	C - 4
Mounting Kit Assembly-Class II	C - 5
Mounting Kit Assembly-Class III	C-5a
Quick Change Hook Assembly	C - 6

D. HYDRAULIC PARTS GROUP

Cylinder Assembly	D - 1
Side Shift Hydraulics Assembly	D - 2
Hydraulics Schematic	D - 3
3-Position Relief Valve	D - 4
Single Relief Valve	D - 5
Solenoid Valve	D - 6
Equal Arm Movement Hydraulics.....	D - 7

E. SPARE PARTS GROUP

Recommended Spare Parts	E - 1
Spare Parts Log	E - 2
Parts Manual Order Form	E - 3

HOW TO ORDER PARTS

For quick, professional, and courteous service when you need parts for your equipment, here is what you should do:

1. Locate the model identification tag on the equipment.
2. Make a note of the model number and serial number.
3. Refer to the appropriate pages in the parts manual for the correct part numbers and quantities.
4. Call your local **Long Reach/Brudi** dealer from whom you purchased the clamp.
5. If you are unable to identify the selling dealer, contact **Long Reach/Brudi** with the serial number. **Long Reach/Brudi** will identify the dealer for you.

For handy reference, write the name of your Long Reach dealer here:

DEALER NAME	_____
ADDRESS	_____ _____
PHONE	_____
CONTACT	_____

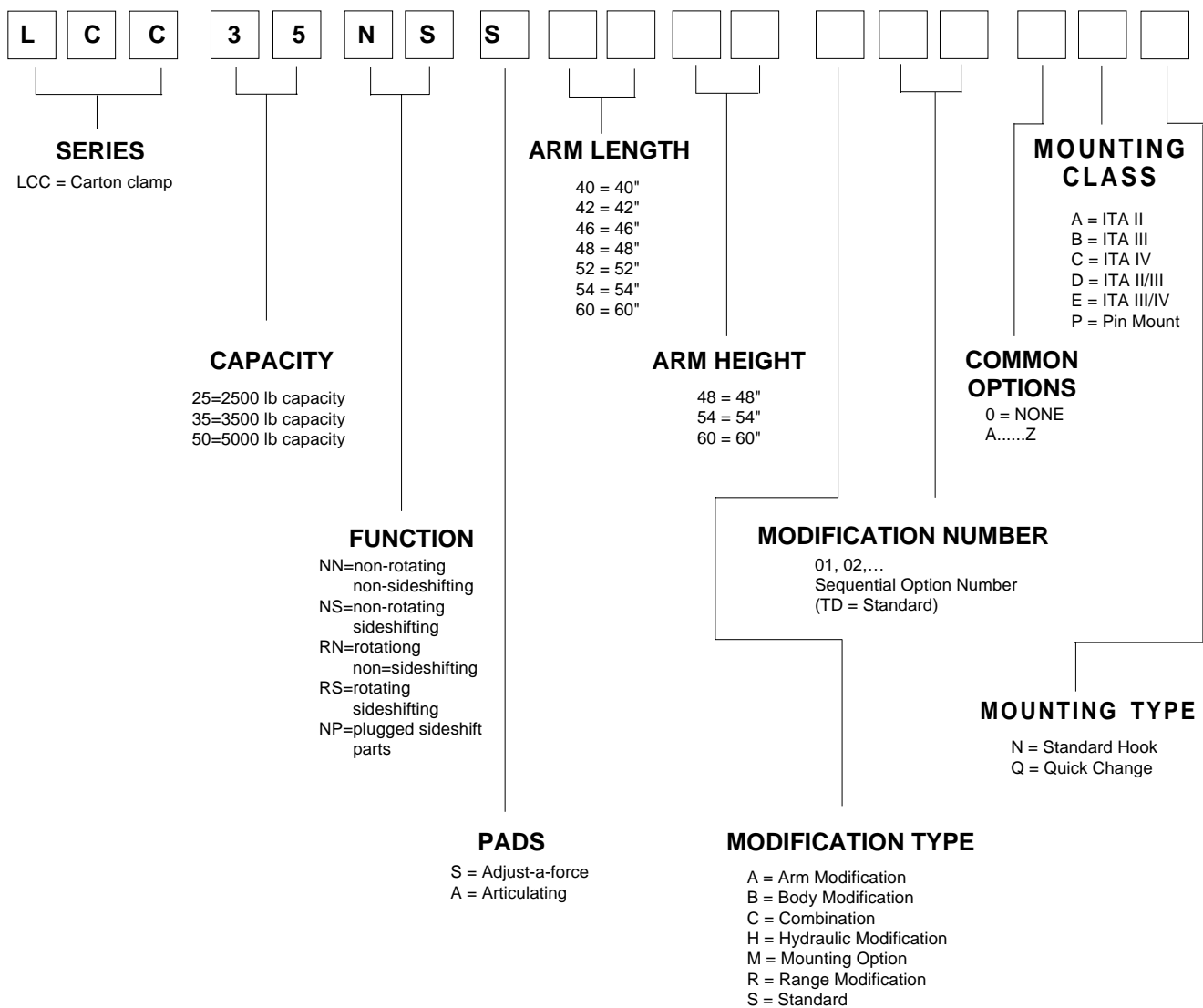
Long Reach/Brudi Parts Department
12300 Amelia Drive
Houston, TX 77045
Parts Phone:(800) 547-3174
Fax:(713) 433-9710

A-1

MODEL NUMBER DESCRIPTION

Each clamp is identified by a model number and a serial number located on the name plate attached to the unit prior to shipment.

Before ordering replacement parts for any unit, be sure to use the correct parts list for your model number. Both model number and serial number must be given to ensure that the correct parts are ordered.



USER'S SAFETY TIPS

Safety is Everyone's Responsibility

Whether you are new on the job or a seasoned veteran, these safety tips may prevent injury to you, to others, or to the materials you are handling. Always be alert, watch out for others, and follow these suggestions:

Attachments Handle Material - Not People.

Safety starts with common sense.

1. **Never** stand on top of material being raised, lowered, or transported.
2. **Never** use the attachment or its load to support a man-carrying device.
3. **Never** position an attachment or load over people.
4. **Never** leave an attachment or load in an elevated position.



5. **Never** stand in front of or beside an attachment that is being operated. Never allow another person to approach an attachment that is being operated.
6. **Always** operate an attachment from the operator's seat, never while standing next to the lift truck.
7. **Never** reach through the mast of the truck. Keep all parts of the body within the driver's compartment.
8. **Do not** allow riders on the truck at any time.
9. **Never** leave a lift truck unattended without lowering the load to the floor, setting the brake, and turning the truck off.
10. **Never** transport a load that impedes full vision forward. Use reverse.
11. **Watch** for pedestrians when transporting. Sudden stops can dislodge all or part of a load.

USER'S SAFETY TIPS

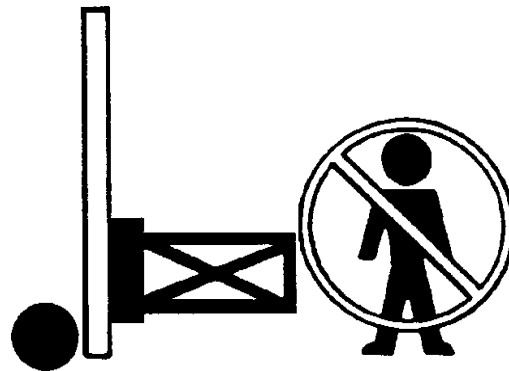
Load Handling

1. **All** operators must be trained and qualified.
2. **Never** overload the attachment. Refer to the attachment nameplate for the rated capacity of the attachment. Refer to the nameplate of the truck for the net working capacity of the truck and attachment. Observe the lower of the two capacities. The attachment capacity is the structural rating of the attachment and should not be exceeded. Net working capacity is the truck manufacturer's rating of the truck/attachment combination.



3. **Never** use a load to support or move another object. Doing so can easily exceed the holding capacity of the attachment, causing loss of the load.
4. **Never** lift, lower, side shift, pivot, rotate, or tilt loads while traveling. Repositioning loads while traveling affects the stability of the truck and may impede vision or clearances.

5. **Never** speed or race a lift truck. High speed adversely affects the stability and steering of the lift truck.
6. **Do not** use an attachment to open or close boxcar doors. Doing so can severely damage the attachment and cause loss of warranty. Using damaged roll clamp pads can cause severe paper damage.



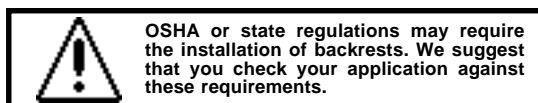
7. **Do not** carry loose items or rolls on top of a load.
8. **Never** allow anyone under a load or under the carriage.
9. **Never** use chains, cables, or other devices in conjunction with an attachment for load handling.
10. **Report** all damaged or faulty equipment. Do not operate a lift truck or an attachment until repairs have been made.
11. **Never** clamp wood, skids, pallets, or any other incompatible load with an attachment.

USER'S SAFETY TIPS

12. **Do not** carry more than one paper roll with a roll clamp unless the clamp is specifically designed for multiple rolls.
13. **Travel** slowly around corners. Sound horn on blind corners. Be careful of tail swing and overhead clearances. Watch in all directions. Avoid sudden stops.
14. **Do not** exceed the specified maximum operating pressure for the attachment. To do so can severely damage the attachment and cause loss of warranty.

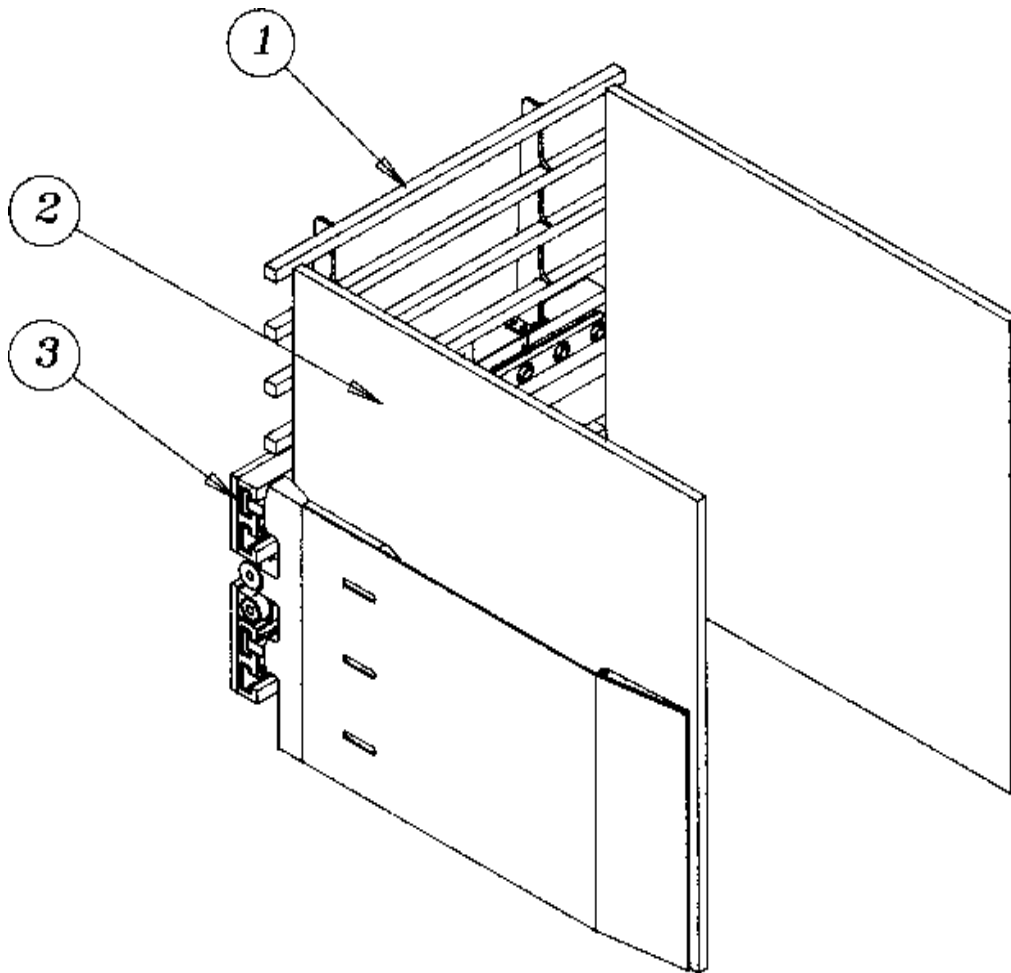
Load Positioning

1. **Always** carry loads as close to the floor as possible, consistent with the surface being traversed. Scraping or bumping the floor surface with the load or the attachment can severely damage the attachment and cause product damage. The mast should be tilted backward.
2. **Always** keep the load positioned as close as possible to the horizontal center of the lift truck.
3. **Always** back down ramps or inclines. Driving forward down a ramp or incline with a clamped load will lessen the stability of the truck.
4. **Do not** cross dock boards or dock levelers with the attachment or carriage fully lowered. Ramming the front or rear of the attachment against a dock board can cause severe damage.
5. **Always** check loads to be handled. If they are broken, unbalanced, loose, or too heavy, advise a supervisor or properly correct the situation prior to handling.
6. **Limit** lift truck movement to a minimum when high stacking. Limit sideshift movement to a minimum when high stacking.
7. **Always** be observant when high stacking. Look for poorly stacked loads, overhead obstacles, broken cartons, or damaged products in the stack.
8. **Always** carry cylindrically shaped loads in the vertical position, not the horizontal.
9. **Always** clamp a paper roll with the contact pads of the paper roll clamp, not the arm or arm base.
10. **Never** rotate a load that is off center to the centerline of rotation. Severe damage to the rotator could result.
11. **Always** position the short arm pad of a paper roll clamp against the roll before clamping to prevent lateral movement of the roll while the roll is being clamped.
12. **Always** check the attachment for proper fit and engagement of the truck carriage.



MECHANICAL PARTS GROUP

COMPLETE ASSEMBLY

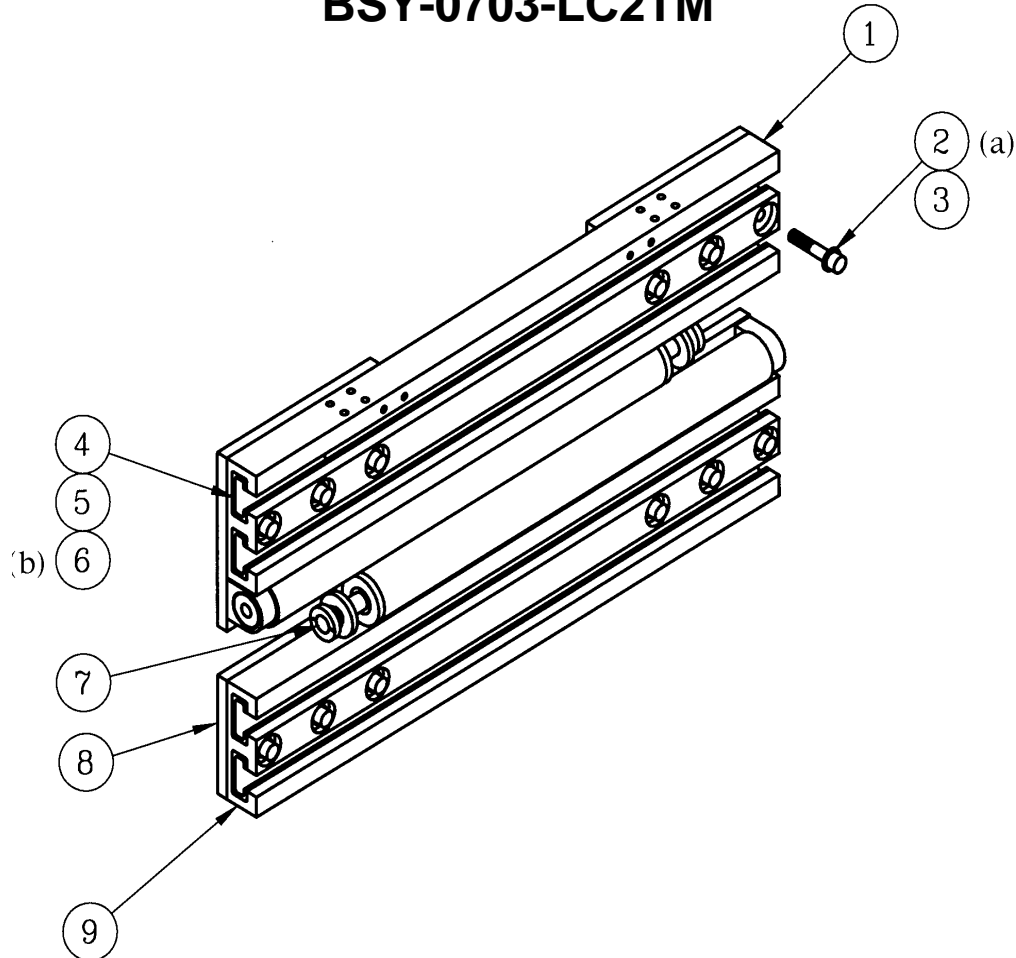


ITEM NO.	DESCRIPTION	NO. REQ'D	PART NO.
1.	Backrest Assembly	—	Page C-4
2.	Arm Assembly	—	Page C-3
3.	Body Assembly	—	Page C-2

C-1

MECHANICAL PARTS GROUP

BODY ASSEMBLY BSY-0703-LC2TM



ITEM NO.	DESCRIPTION	NO. REQ'D	PART NO.
1.	Body Extrusion, Top	1	BSN-0208-LC2TM
2.	Capscrew (See Note a)	12	74G-1048
3.	Lockwasher	12	27E-10
4.	Wearstrip, Outer	8	WST-0002-LCSTM
5.	Wearstrip, Inner	4	WST-0003-LCSGM
6.	Wearstrip Retainer (See Note b)	8	WST-0005-LCSTM
7.	Cylinder	2	Page D-1
8.	Body Strap Group	2	STP-0337-LC2TM
9.	Body Extrusion, Bottom	1	BSN-0213-LC2TM
	Body Assembly	1	BSY-0703-LC2TM

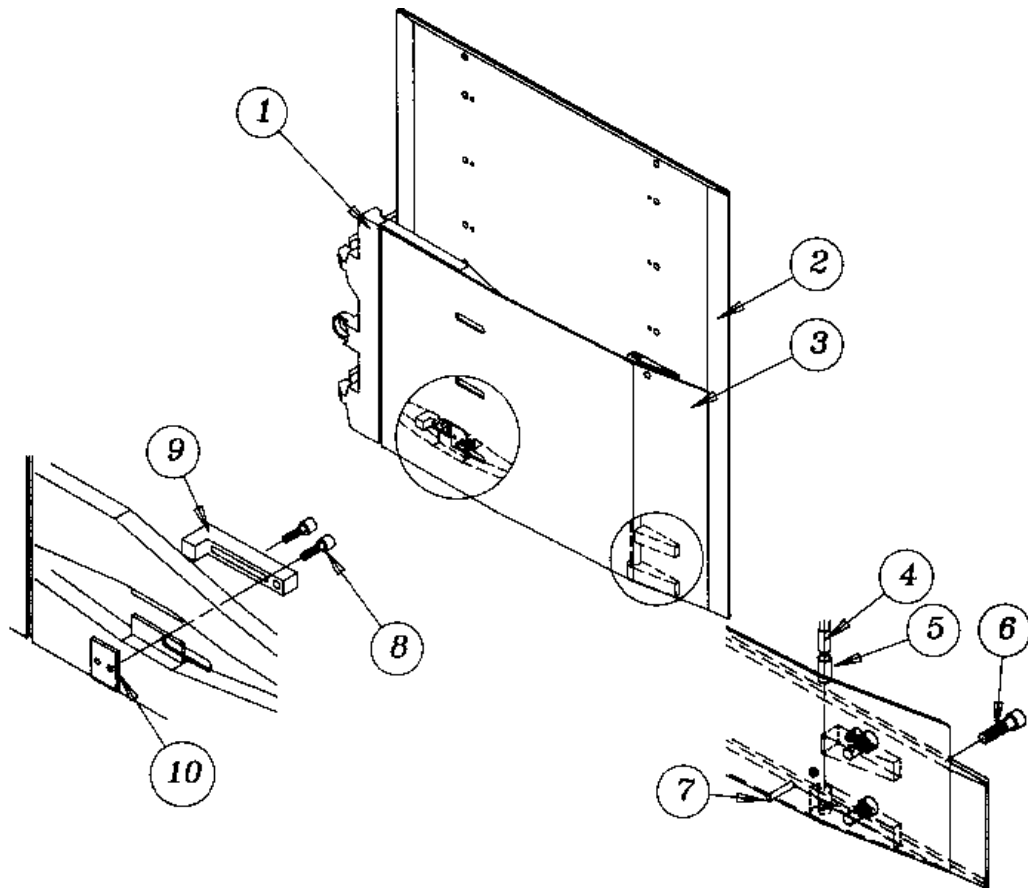
NOTES:

(a) Torque: 100 ft•lbs.

(b) Prime & Loc-Tite®, No Torque.

MECHANICAL PARTS GROUP

ARM ASSEMBLY



ITEM NO.	DESCRIPTION	NO. REQ'D	PART NO.
1.	Arm Weldment	2	<i>Page C-3a</i>
2.	Arm Pad	2	<i>Page C-3a</i>
3.	Arm Cover Plate	2	<i>Page C-3a</i>
4.	Pivot Pin	4	PNB-0010-LCCTM
5.	Bushing	4	RB-181
6.	Capscrew	10	25G-1020
7.	Clevis Pin	4	07F-1018
8.	Capscrew	—	—
	• Hex Head	6	01C-0632
	• Socket Head	6	73G-0628
9.	Fulcrum	6	GCN-0014-LCCTM
10.	Fulcrum Pad	6	GCN-0085-LCCTM

MECHANICAL PARTS GROUP

ARM, COVER, PAD CHARTS

HOW TO USE THE CHART

1. Locate your model number on the name plate tag.
2. Locate the fields which correspond to pad length and height. (*See Page A-2*)
Ex.: LCC35NSS4654STD0AQ 46: Pad Length 54:Pad Height
3. For Chart A - Arm Weldments and Covers use Pad Length
4. For Chart B - Pads Use Pad Length and Pad Height

CHART A - ARM WELDMENTS

LENGTH	40	42-46	48-52	54-58	60
ARM	GCN-0513-LC2TM	GCN-0513-LC2TM	GCN-0515-LC2TM	GCN-0514-LC2TM	
COVER	GCN-0533-LC2TM	GCN-0517-LC2TM	GCN-0518-LC2TM	GCN-0519-LC2TM	GCN-0520-LC2TM

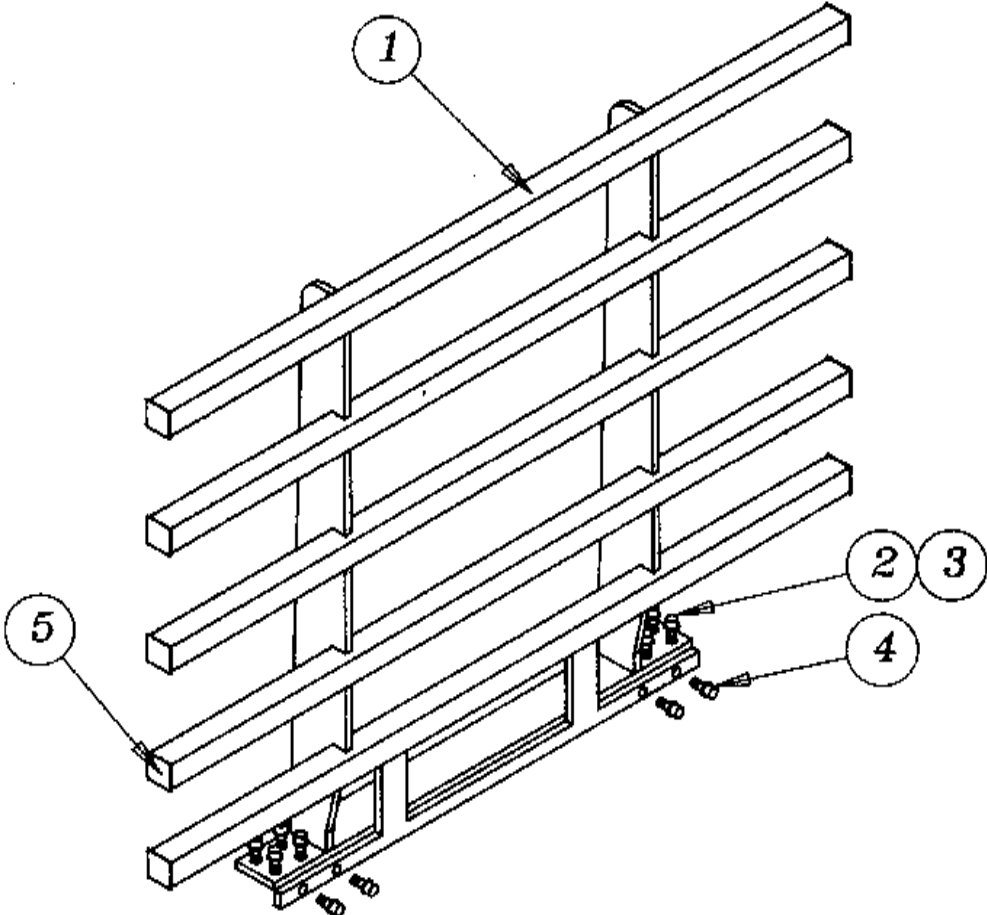
CHART B - ARM PADS

LENGTH x HEIGHT	NUMBER	LENGTH x HEIGHT	NUMBER
40L x 48H	PCN-0043-LCCTM	48L x 48H	PCN-0041-LCCTM
40L x 54H	PCN-0048-LCCTM	48L x 54H	PCN-0061-LCCTM
40L x 60H	PCN-0111-LC2TM	48L x 60H	PCN-0039-LCCTM
42L x 48H	PCN-0042-LCCTM	52L x 48H	PCN-0108-LC2TM
42L x 54H	PCN-0116-LC2TM	52L x 54H	PCN-0110-LC2TM
42L x 60H	PCN-0117-LC2TM	52L x 60H	PCN-0113-LC2TM
46L x 48H	PCN-0107-LC2TM	54L x 48H	PCN-0054-LCCTM
46L x 54H	PCN-0109-LC2TM	54L x 54H	PCN-0057-LCCTM
46L x 60H	PCN-0112-LC2TM	54L x 60H	PCN-0118-LC2TM

C-3a

MECHANICAL PARTS GROUP

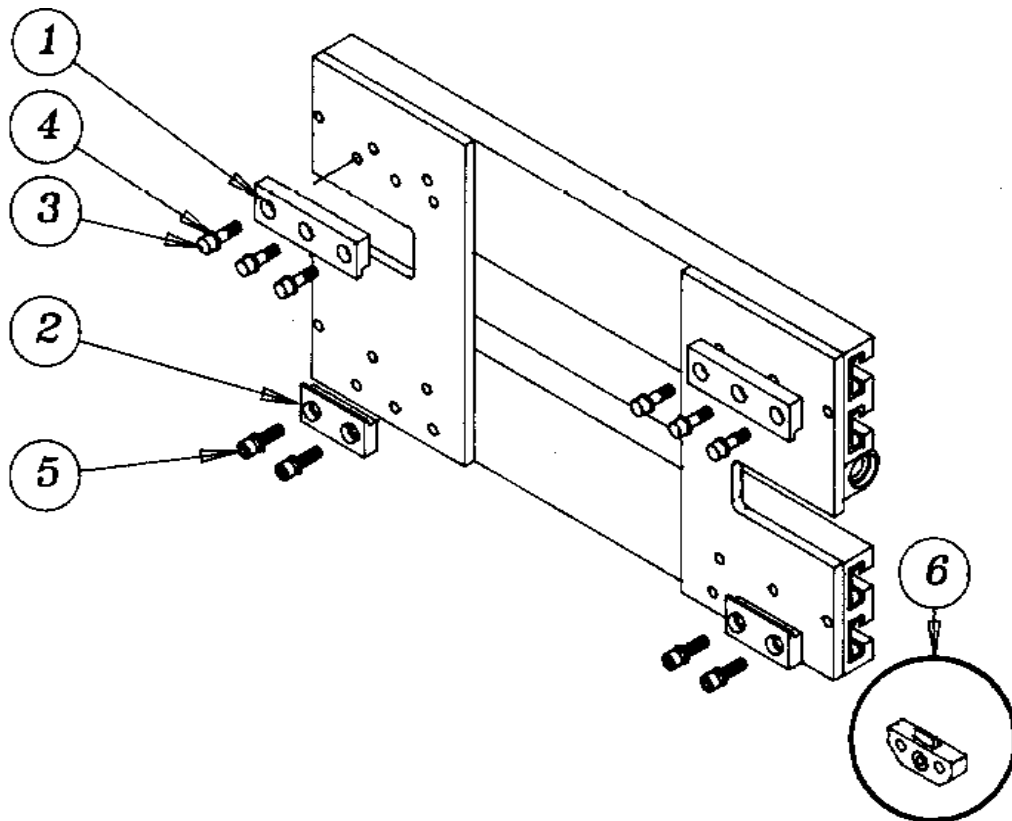
BACKREST ASSEMBLY



ITEM NO.	DESCRIPTION	PART NO.	PAD HEIGHTS - QUANTITY		
			48" HIGH	54" HIGH	60" HIGH
1.	Backrest	BKR-0001-LCCTM	1	—	—
—	—	BKR-0024-LCCTM	—	1	—
—	—	BKR-0026-LCCTM	—	—	1
2.	Capscrew	74G-0816	8	8	8
3.	Lockwasher	04E-08	8	8	8
4.	Capscrew	09G-0616	4	4	4
5.	End Cap	M-293	8	10	12

MECHANICAL PARTS GROUP

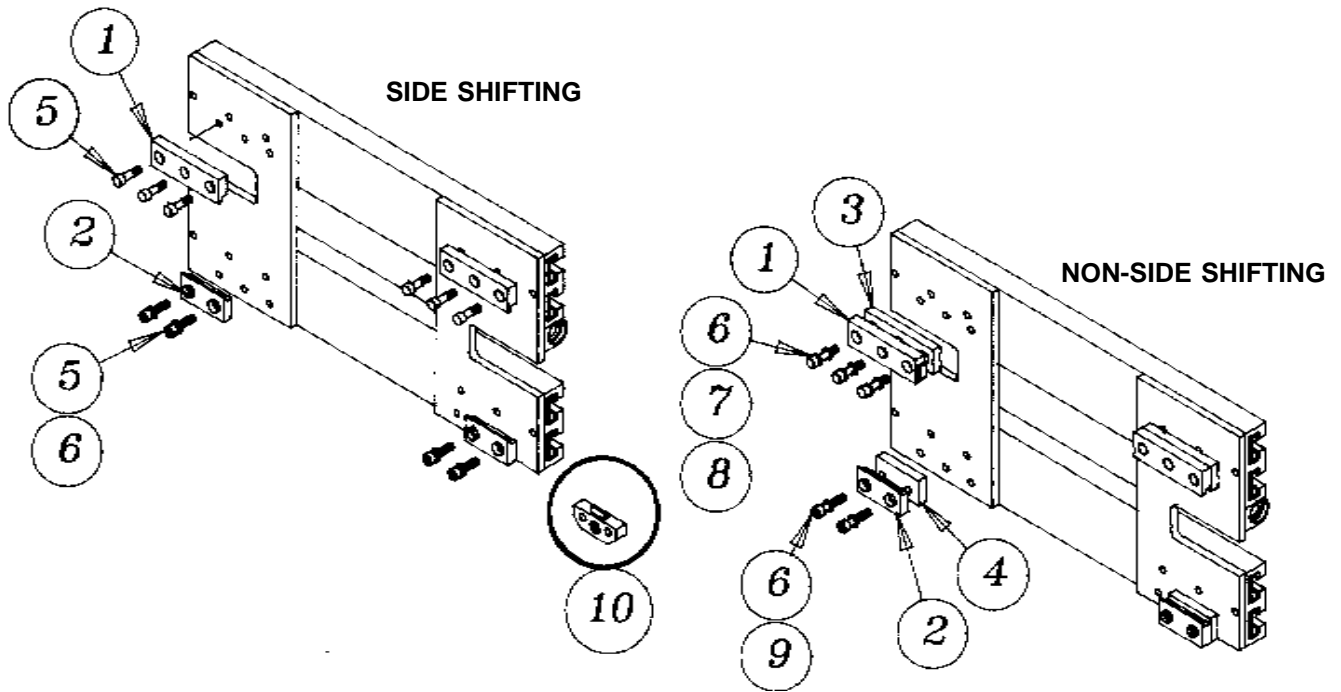
MOUNTING KIT ASSEMBLY CLASS II



ITEM NO.	DESCRIPTION	NO. REQ'D	PART NO.
1.	Top Hook, Left	1	HKS-0188-LC2TM
	Top Hook, Right	1	HKS-0001-LCSSM
2.	Bottom Hook	2	XO-209
3.	Capscrew-Top Hook	6	74G-1020
4.	External Lockwasher	10	05E-10
5.	Capscrew-Bottom Hook	4	74G-1020
6.	Quick Change Hook	-	<i>Page C-6</i>

MECHANICAL PARTS GROUP

MOUNTING KIT ASSEMBLY CLASS III

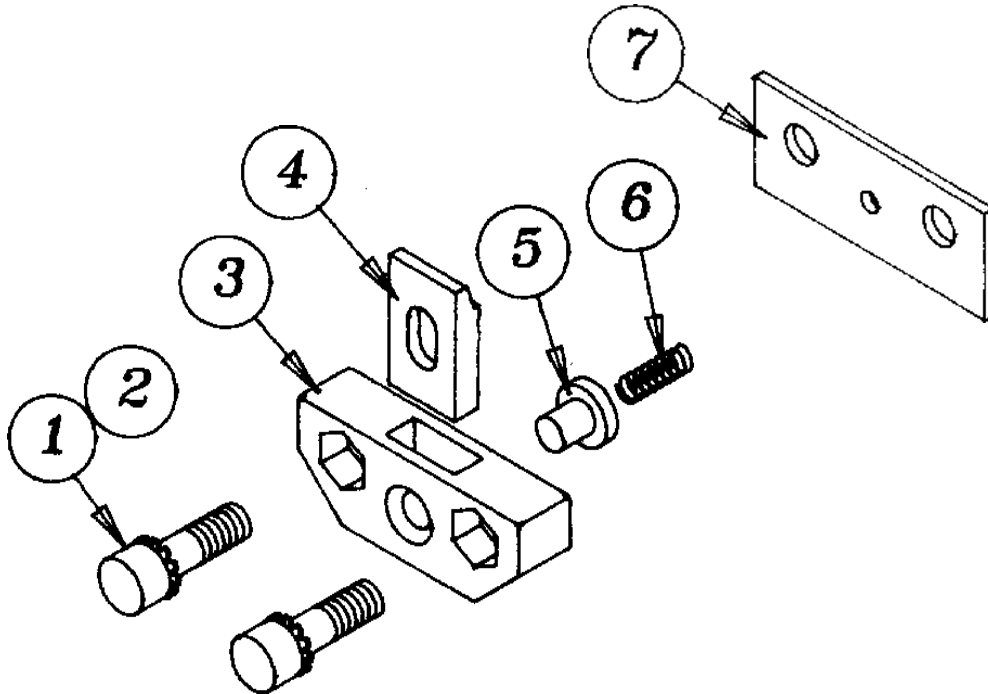


ITEM NO.	DESCRIPTION	QTY.		PART NO.	
				SIDE SHIFTING	NON-SIDE SHIFTING
1.	Top Hook, Left	1	1	HKS-0193-LC2TM	HKS-0193-LC2TM
	Top Hook, Right	1	1	HKS-0002-LCSSM	HKS-0002-LCSSM
2.	Bottom Hook	2	2	HKS-0003-LCSSM	HKS-0003-LCSSM
3.	Spacer, Top Hook	<i>N/A</i>	2	<i>Not Req'd</i>	SPS-0290-LCCTM
4.	Spacer, Bottom Hook	<i>N/A</i>	2	<i>Not Req'd</i>	SPS-0291-LCCTM
5.	Capscrew	10	<i>N/A</i>	74G-1024	<i>N/A</i>
6.	External Lockwasher	4	10	05E-10	05E-10
7.	Lockwasher	<i>N/A</i>	6	<i>N/A</i>	04E-06
8.	Capscrew-Top Hook	<i>N/A</i>	6	<i>N/A</i>	74G-1048
9.	Capscrew-Bottom Hook	<i>N/A</i>	4	<i>N/A</i>	74G-1044
10.	Quick Change Hook	-	-	<i>Page C-6</i>	<i>Page C-6</i>

C-5a

MECHANICAL PARTS GROUP

QUICK CHANGE HOOK ASSEMBLY



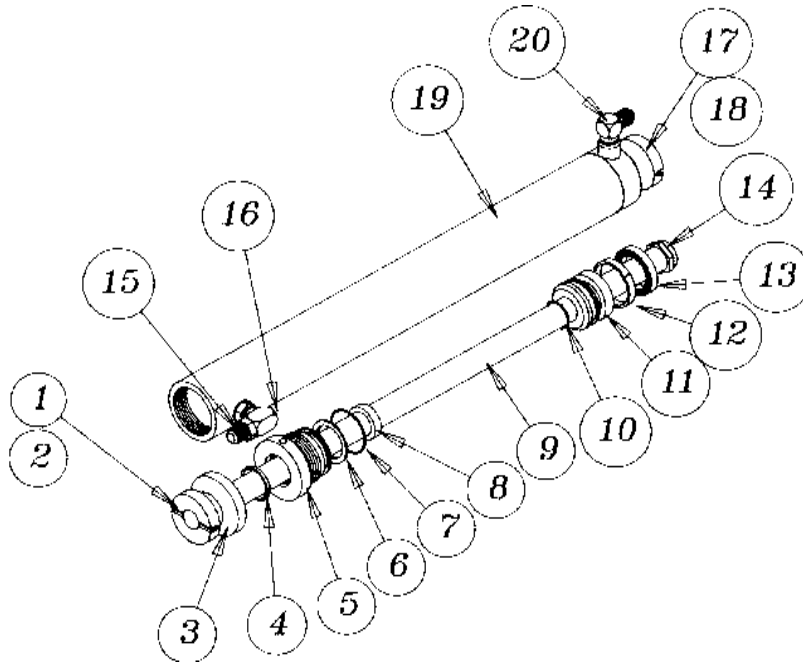
ITEM NO.	DESCRIPTION	QTY.		PART NO.
		CLASS II	CLASS III	
1.	Capscrew	4	–	73G-1224
	Capscrew	–	4	74G-1024
2.	Lockwasher	4	4	05E-10
3.	Hook Body	2	2	RXO-201
4.	Hook Slide	–	–	–
–	• Class II	2	–	RXO-202
–	• Class III	–	2	15607-2B
5.	Push Button	2	2	RXO-203
6.	Spring	2	2	N-235
7.	Shim	–	2	XO-210
–	*Hook Kit Class II	1	–	QCHA-LC2
–	*Hook Kit Class III	–	1	QCHB-LC2

* Kit contains two Hook Assemblies as shown.

C-6

HYDRAULIC PARTS GROUP

CYLINDER ASSEMBLY CSY-0333-LC2DM



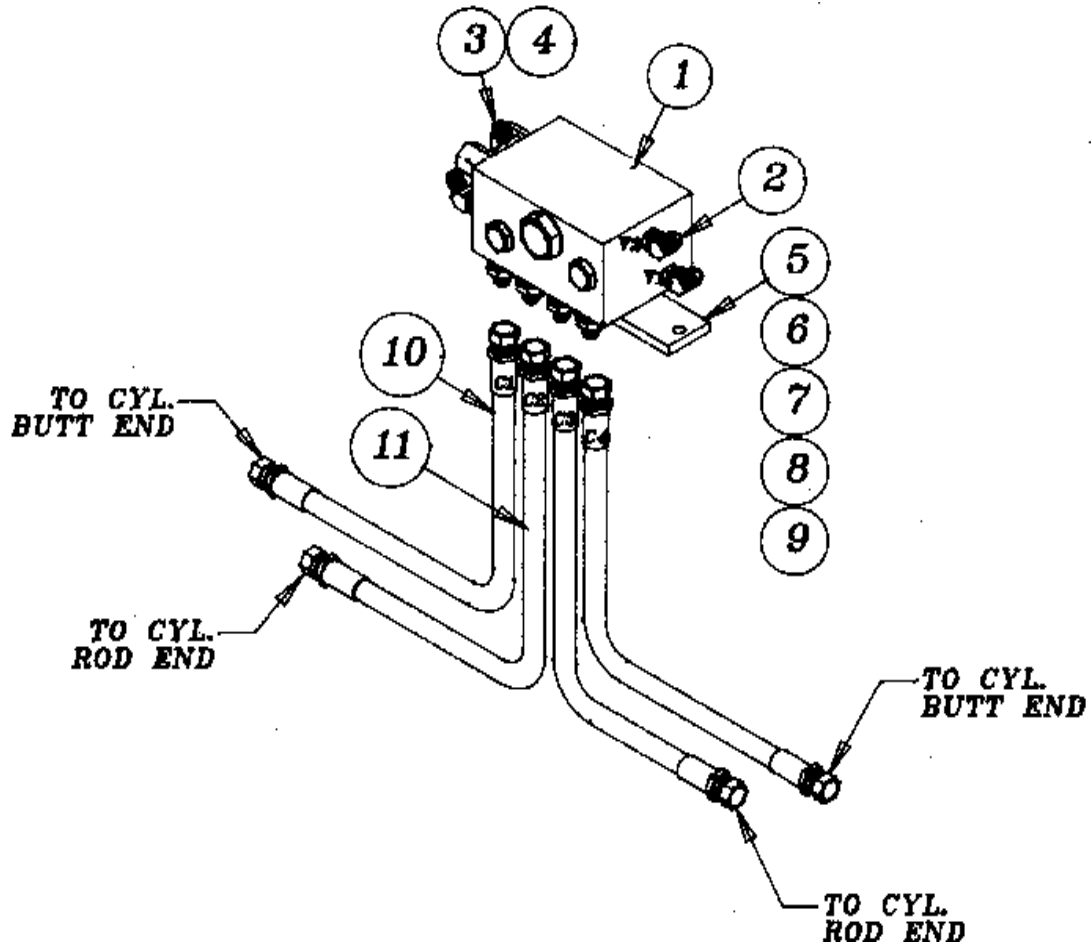
ITEM NO.	DESCRIPTION	NO. REQ'D	PART NO.
1.	Flush Nut	1	CFN-0006-LC2TM
2.	Cotter Pin	1	01F-0424
3.	Spacer Washer	1	SPS-0368-LC2TM
4.	Wiper Ring	1	*435240.15
5.	Stuffing Box	1	CSB-0018-LC2TM
6.	Backup Ring	1	*076800-224
7.	O Ring	1	*098629-224
8.	Rod Seal	1	*098618.059
9.	Cylinder Rod	1	CRD-0269-LC2DM
10.	O Ring	1	*098629-216
11.	Piston	1	CPN-0024-LC2TM
12.	Piston Bearing	1	*KB-166
13.	Piston Seal	1	*437152.095
14.	Flex Locknut	1	O-86
15.	Straight Adapter	1	816-0606
16.	Plug	1	HF-31
17.	Flushr Nut	1	CFN-0005-LC2TM
18.	Cotter Pin	1	01F-0640
19.	Cylinder Tube	1	CTB-0747-LC2DM
20.	90° Fitting	1	853-0606
-	Cylinder Assembly	-	CSY-0333-LC2DM
-	Packing Kit <i>(Not Shown)</i>	-	HKT-0035-LC2DM

NOTE: Included in packing kit. Kit includes enough to repack 2 cylinders.

D-1

HYDRAULIC PARTS GROUP

SIDE SHIFT HYDRAULIC ASSEMBLY

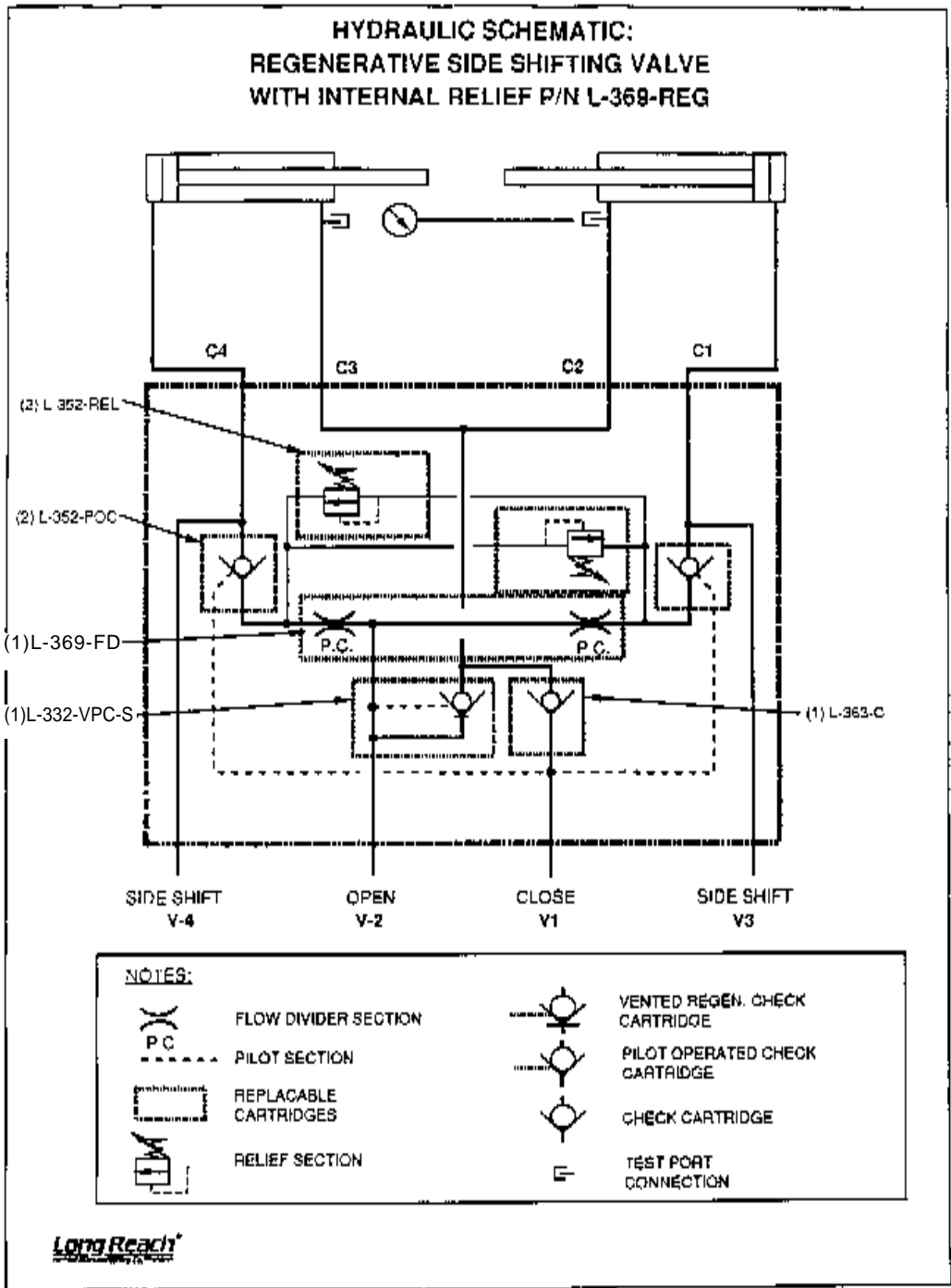


ITEM NO.	DESCRIPTION	NO. REQ'D	PART NO.
1.	Valve	1	L-369-REG
2.	45° Fitting	3	852-0806
3.	45° Swivel Fitting	1	862-0606
4.	Straight Fitting	5	850-0608
5.	Valve Plate	1	HVP-0151-LC2TM
6.	Capscrew	2	09G-0612
7.	Capscrew	1	73G-0612
8.	Lockwasher	1	04E-06
9.	Roll Pin	1	02F-0816
10.	Hose Assembly	2	O-118
11.	Hose Assembly	2	O-284

D-2

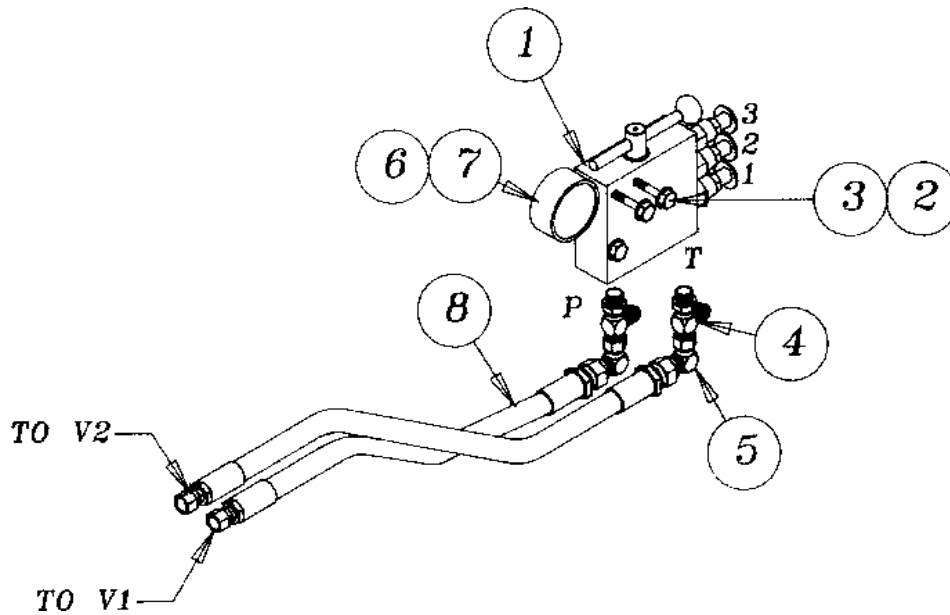
HYDRAULIC PARTS GROUP

HYDRAULICS SCHEMATIC



HYDRAULIC PARTS GROUP

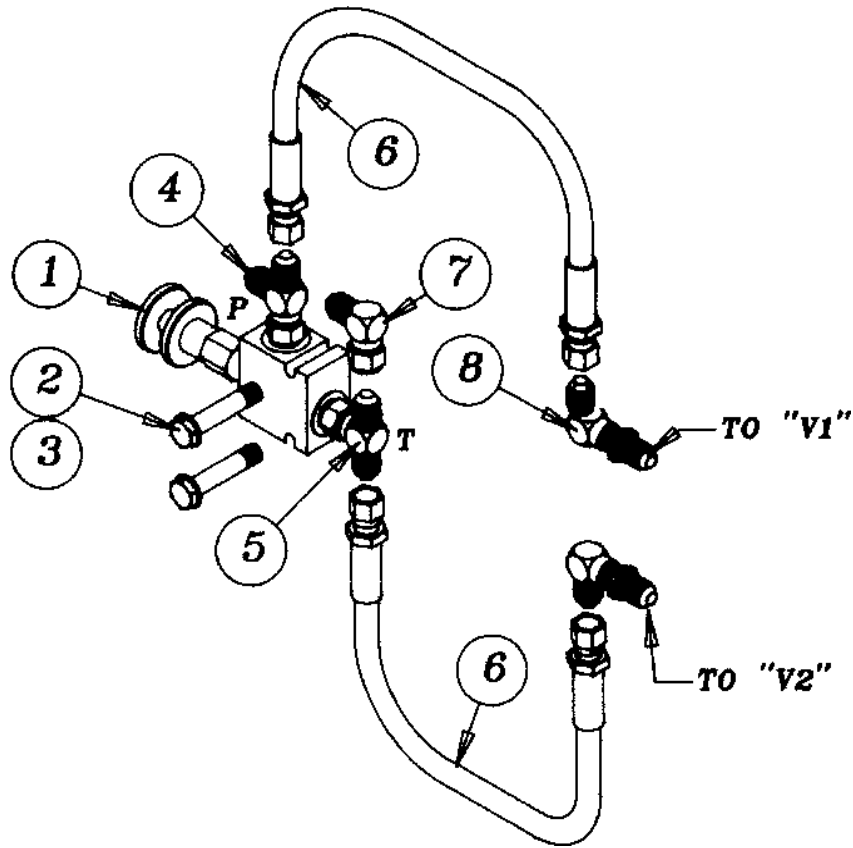
3-POSITION RELIF VALVE



ITEM NO.	DESCRIPTION	NO. REQ'D	PART NO.
1.	Relief Valve	1	L-354
2.	Capscrew	3	01C-0432
3.	Lockwasher	3	04E-04
4.	Tee Fitting	2	854-060806
5.	Swivel 90° Fitting	2	863-0606
6.	Gauge <i>(Optional)</i>	1	L-335
7.	Straight Adapter <i>(With Gauge)</i>	1	032-0604
—	• Plug <i>(Without Gauge)</i>	1	033-06
8.	Hose Assembly	2	O-211

HYDRAULIC PARTS GROUP

SINGLE RELIEF VALVE

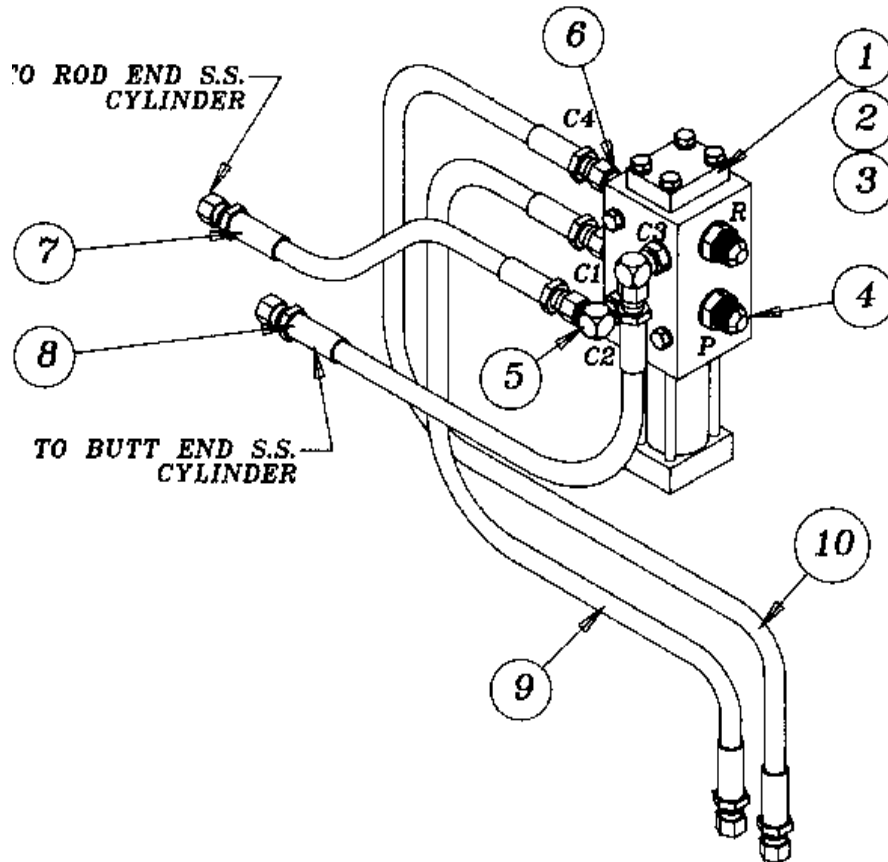


ITEM NO.	DESCRIPTION	NO. REQ'D	PART NO.
1.	Relief Valve	—	—
—	• Fixed	1	L-282
—	• Adjustable	1	L-279
2.	Capscrew	2	01C-0432
3.	Lockwasher	2	04E-04
4.	Tee Fitting (Port P)	1	855-060608
5.	Tee Fitting (Port T)	1	854-060806
6.	Hose Assembly	2	O-149
7.	90° Fitting	1	863-0606
8.	90° Bulkhead Adapter	2	833-0606

D-5

HYDRAULIC PARTS GROUP

SOLENOID VALVE

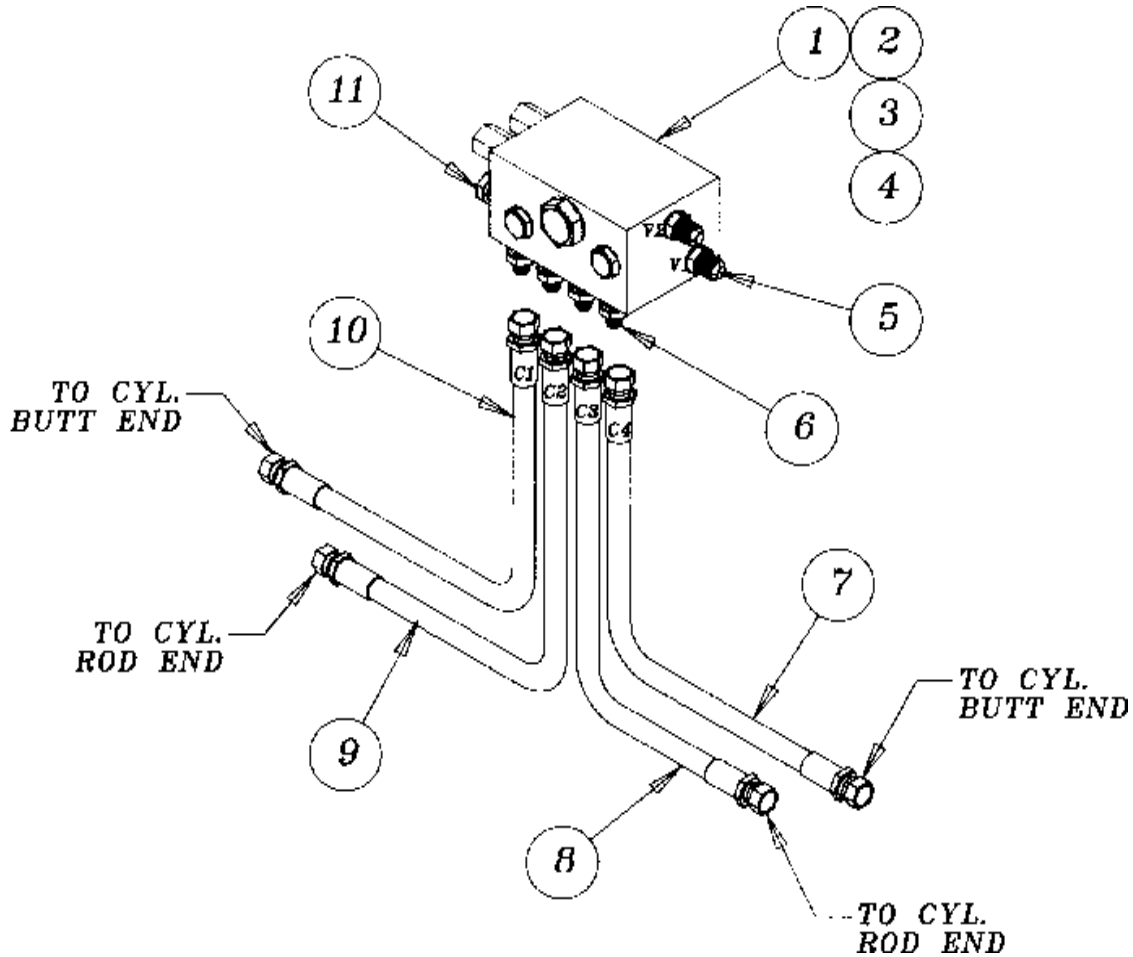


ITEM NO.	DESCRIPTION	NO. REQ'D	PART NO.
1.	Solenoid Valve	1	L-207-3
2.	Capscrew	2	01C-0448
3.	Lockwasher	2	04E-06
4.	90° Fitting	2	853-0806
5.	90° Fitting	2	853-0606
6.	Straight Fitting	2	850-0606
7.	Hose Assembly	1	O-118
8.	Hose Assembly	1	O-118
9.	Hose Assembly	1	O-115
10.	Hose Assembly	1	O-211

D-6

HYDRAULIC PARTS GROUP

EQUAL ARM MOVEMENT HYDRAULIC ASSEMBLY



ITEM NO.	DESCRIPTION	NO. REQ'D	PART NO.
1.	Valve	1	L-369-REG
2.	Valve Plate	1	HVP-0151-LCSTM
3.	Capscrew	2	09G-0612
4.	Capscrew	4	73G-0612
5.	Fitting	4	852-0806
6.	Straight Fitting	4	850-0608
7.	Hose Assembly	1	O-118
8.	Hose Assembly	1	O-284
9.	Hose Assembly	1	O-284
10.	Hose Assembly	1	O-118
11.	O Ring Plug	2	033-08

D-7

SPARE PARTS GROUP

RECOMMENDED SPARE PARTS

DESCRIPTION	PART NO.	NO. REQ'D PER NO. OF UNITS IN SERVICE	
		1 - 5	6 - 10
Cylinder Assembly	CSY-0333-LC2DM	0	2
Cylinder Packing Kit	HKT-0035-LC2DM	1	2
Wear Strips	—	—	—
Inner	WST-0003-LCSGM	4	8
Outer	WST-0002-LCSTM	8	16
Wear Strip Retainer	WST-0005-LCSTM	8	8
Sideshifting Reg. Valve	L-369-REG	0	1
Check Cartridge	L-363-C	1	2
Vented P.O. Check Cartridge	L-369-VPC-S	1	2
Relief Cartridge	L-352-REL	2	4
Flow Divider Cartridge	L-369-FD	1	2
P.O. Check Cartridge	L-352-POC	2	4
Seal Kit – Check Cartridge	L-330-SK	1	2
Seal Kit – Relief Cartridge	L-269-1	2	4
Seal Kit – Flow Divider Cartridge	L-277-2	1	2

PARTS ORDERING PROCEDURE

Refer to "How to Order Parts," pages A - 1 and A - 2.

WARRANTY

Long Reach/Brudi warrants its new lift truck products for one hundred eighty (180) days from the date of delivery to the original user. This warranty is limited to the replacement of such parts as Long Reach/Brudi shall inspect and find, at its sole discretion, to be defective in workmanship or material.

Long Reach/Brudi products are warranted only if Long Reach/Brudi applicable installation and use instructions have been carefully followed. This warranty does not extend to problems resulting from normal or accelerated wear, unauthorized alterations, improper installation, abuse, or lack of proper maintenance. Prior written authorization must be obtained for repairs other than the removal of defective parts and replacement with parts supplied by Long Reach/Brudi.

It is specifically agreed that the liability of Long Reach/Brudi under all guarantees or warranties, either expressed or implied, is strictly limited to those terms as hereinbefore provided. Long Reach/Brudi assumes no responsibility for loss, damage, or injury, either direct or consequential, including that based on strict liability, resulting from or occasioned by possession or use of its products.

On equipment of other than Long Reach/Brudi manufacture, but supplied by it either as a separate unit or as an integral part of one of its products, the warranty of the original manufacturer shall apply. *There are no warranties that extend beyond those stated on the face of this agreement.*

Long Reach[®]
Manufacturing Co.

Brudi[®]

P.O. Box 45069 - Houston, TX 77245-0069

SAFE DELIVERY POLICY

We **DO NOT** guarantee safe delivery. Please read the following policy carefully.

1. Our terms of sale are F.O.B. our factory - **the responsibility for damage in transit is the carriers'** whether it be visible or concealed damage.
2. Inspect this shipment immediately. Insist that visible damages be indicated on your copy of the freight bill.
3. Open any boxes as soon as possible, preferably within 15 days of delivery and **inspect for concealed damages.**
4. In case of damage notify delivering carrier immediately requesting that inspection be made. Place a phone call to the delivery carrier and confirm with written request, holding copy of request for claim purposes.
5. We have taken every precaution to ensure safe arrival, but our responsibility ceased when the shipment was turned over to the carrier.
6. Claims for damages must be made by you to the carrier within 15 days of receipt of delivery.

Return Goods

1. Do not return any product without our authorization.
2. Call customer Service and obtain a return authorization number.
3. Special and custom-manufactured items cannot be returned.
4. Return merchandise will not be accepted by us from the carrier unless it is returned freight prepaid within ten (10) days of the return authorization date and is identified with the RA assigned.

Long Reach Manufacturing - Houston, Texas. For new equipment, parts, technical service, warranty and return authorization, call 1-800-547-3174 or (713) 434-3400. Fax: (713) 433-9710.

RoL-Lift Corporation- Little Rock, Arkansas. For new equipment, parts and return authorizations on new equipment call 1-800-547-3174 or (713) 434-3400. Fax: (713) 433-9710. For technical service, warranty on new equipment and parts, and return authorizations for warranty items call (501) 227-4200. Fax: (501) 227-9509.